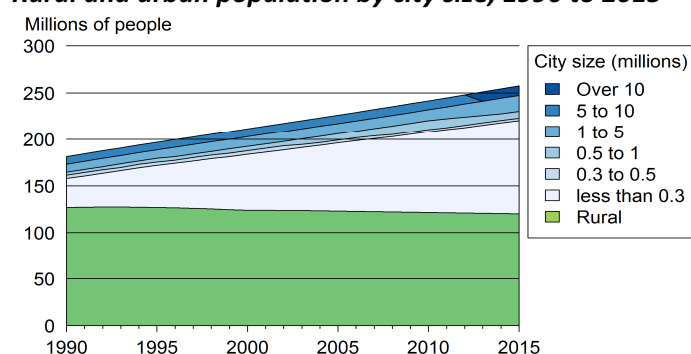


# Indonesia

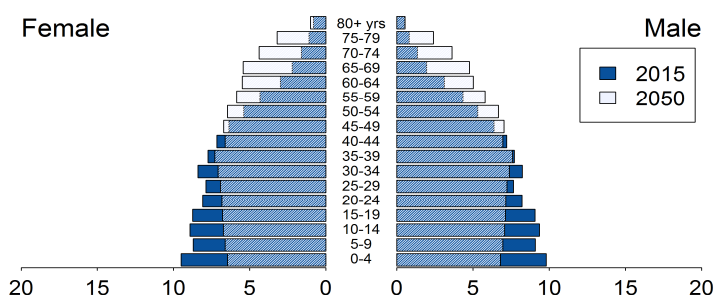
## Demographic trends

Population size (millions), 1990, 2015	181.4	257.6
Average annual growth rate (%), 1990, 2015	1.8	1.2
Urban population (% of pop.), 1990, 2015	30.1	53.4
in cities over 1 million people	9.2	10.6
in cities from 0.3 to 1 million people	3.8	3.9
in cities < 0.3 million people	17.1	38.9
Population density (pop. per km <sup>2</sup> ), 1990, 2012	95.3	130.2
Foreign population (% of pop.), 1990, 2013	0.3	0.1
Net migration rate (migrants per 1 000 pop.)	-0.4	-0.6
Life expectancy at birth (in years)	64.2	68.6
Total fertility rate, 1990, 2015 (Live births per woman)	3.1	2.4
Adolescent fertility rate (Live births per 1 000 women aged 15-19 years)	63.1	51.5

## Rural and urban population by city size, 1990 to 2015



## Population age structure, 2015 and 2050



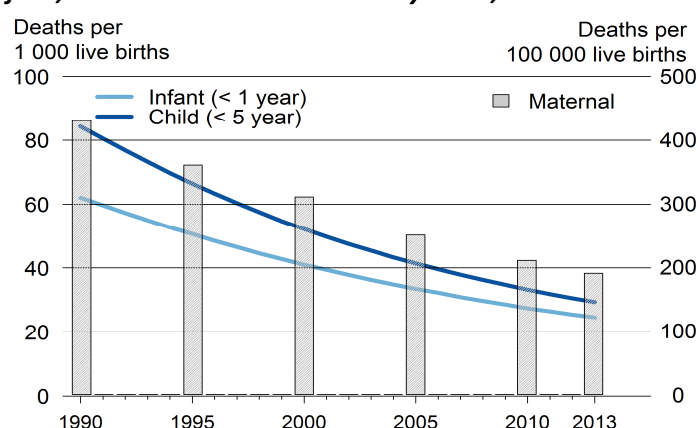
## Poverty and inequalities

Population living in poverty (% of population)		
below 1.25 dollars (2005 PPP) a day, 1990, 2011	54.3	16.2
below 2 dollars (2005 PPP) a day, 1990, 2011	84.6	43.3
below national poverty line, 1996, 2014	17.6	11.3
Gini index (income equality coefficient), 1990, 2011	29.2	38.1
Population with access to		
Improved water sources (% of pop.)		
Rural, 1990, 2015	61	80
Urban, 1990, 2015	89	94
Improved sanitation (% of pop.)		
Rural, 1990, 2015	24	48
Urban, 1990, 2015	61	72

## Health

Mortality rate (deaths per 1 000 live births)		
Infant, 1990, 2013	62	24.5
Under-five, 1990, 2013	84.3	29.3
Children under-five underweight (%), 1992, 2010	29.8	18.6
Maternal mortality ratio, 1990, 2013 (deaths per 100 000 live births)	430	190
Antenatal care visit, at least one visit, 1991, 2013 (% of women with live births)	76.3	95.4

## Infant, child and maternal mortality rates, 1990 to 2013



## Population living with HIV

Total adults, number, 1990, 2013	89	6E+05
AIDS deaths, number, 1990, 2013	0.1	29116
HIV prevalence rate (% pop. 15-49 yrs), 1990, 2013	0.0	0.5

## Total health expenditure

% of GDP, 1995, 2013	2	3.1
Current PPP dollars per capita, 1995, 2012	44.3	150.1
General government health expenditure		
% of government expenditure, 1995, 2013	4.8	6.6
Current PPP dollars per capita, 1995, 2011	15.4	43.3

## Education

Gross enrolment (% of respective school age population)		
Primary education	-	-
Secondary education	-	-
Tertiary education, 1999, 2012	14.9	31.5
Adult literacy rate (% of pop. aged 15 yrs and above)		
Female, 1990, 2015	75.3	91.5
Male, 1990, 2015	88.0	96.3
Public expenditure on education		
% of GDP, 1994, 2012	1.0	3.6
% of total government expenditure, 2012	-	18.1
Public expenditure per pupil (% of GDP per capita)		
Primary, 2012	-	11.9
Secondary, 2012	-	10.7
Tertiary, 2012	-	24.3
Gross domestic expenditure on research/development		
% of GDP, 2000, 2013	0.1	0.1
Current PPP dollars per capita, 2000, 2013	3.1	8.5

## Air pollution and climate change

### Greenhouse gas emissions

Million tons CO <sub>2</sub> -e <sub>q</sub> , 1990, 2012	1165.1	780.6
% change per annum, 1990, 2012	31.1	2.2
Tons CO <sub>2</sub> -e <sub>q</sub> per capita, 1990, 2012	6.4	3.1
Tons CO <sub>2</sub> -e <sub>q</sub> /1 000 US dollars GDP, 1990, 2012	9.3	0.9

### CO<sub>2</sub> emissions from fuel combustion

Million tons CO <sub>2</sub> -e <sub>q</sub> , 1990, 2013	133.9	424.6
% change per annum, 1990, 2012	22.7	8.8
Tons CO <sub>2</sub> -e <sub>q</sub> per capita, 1990, 2013	0.7	1.7
Grams CO <sub>2</sub> -e <sub>q</sub> /US dollar GDP, 1990, 2013	892.1	938.7

## Water

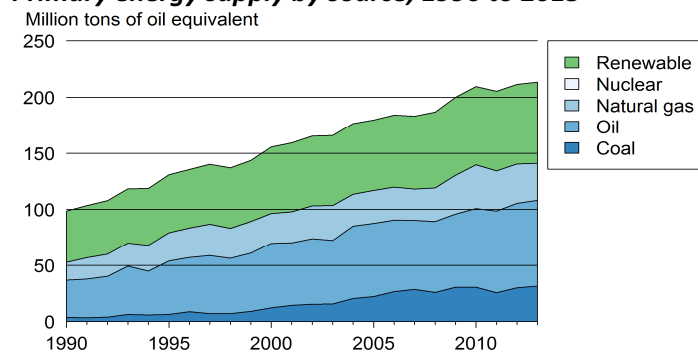
Renewable water available *, 1992, 2014	10 753	7 935
Domestic water withdrawal *, 1990, 2005	26.1	61.8
* (m <sup>3</sup> per capita per annum)		

## Energy

### Total primary energy supply (TPES) (kg of oil equivalent)

Per capita, 1990, 2013	543.5	850.2
Per 1 000 GDP 2005 US dollars, 1990, 2013	657.1	472.3
Renewable energy (% of TPES), 1990, 2012	46.6	34.1

### Primary energy supply by source, 1990 to 2013



## Biodiversity

### Areas protected

Marine (% of territorial water), 1990, 2014	0.4	5.8
Terrestrial (% of surface area), 1990, 2014	10.1	14.7
Forest (% of land area), 1990, 2012	65.4	51.4

## Natural disasters

Deaths (number per annum), 1990, 2014	280	246
People affected (1 000 per annum), 1990, 2014	40	549
Economic damages (% of GDP), 1990, 2014	0.0	0.1

## Connectivity

Mobile cellular subscriptions,* 2000, 2014	1.7	125.4
Internet users,* 2000, 2014	0.9	17.1
Fixed broadband internet subscribers,* 2000, 2014	0.0	1.2
* (per 100 population)		

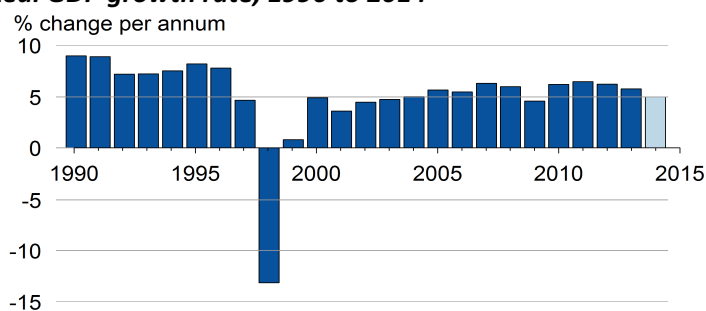
Railway density, 1991, 2012	2.8	2.6
Road density, 1990, 2011	159.4	274.1
Km of railway/road per 1 000 km <sup>2</sup> land area		
Paved roads (% of roads), 1990, 2011	45.1	57.0
Passenger cars (per 1 000 pop.), 2000, 2011	14.2	39.4
Road traffic deaths (per 100 000 pop.), 2013	-	15.3

## Economic growth

### Gross domestic product (GDP)

Constant, billion 2005 US dollars, 1990, 2014	159.8	502.2
Current US dollars per capita, 1990, 2013	693	3 456
2011 PPP per capita, 1990, 2013	4 229	9 203

### Real GDP growth rate, 1990 to 2014 <sup>1/</sup>



<sup>1/</sup> 2014: World Bank estimates

## Employment

### Employment-to-population ratio

% Population aged 15 and above, 1991, 2013	60.3	62.6
% Female aged 15 and above, 1991, 2013	45.4	47.0
% Male aged 15 and above, 1991, 2013	75.4	78.1
Unemployment rate (% of labour force), 1991, 2013	6.2	6.3
Female, 1991, 2013	6.9	7.3
Male, 1991, 2013	5.7	5.6
Youth unemployment rate		
% of labour force aged 15-24, 1991, 2013	17.6	21.6

## Fiscal balance

Government revenue (% of GDP), 1990, 2013	18.8	15.7
Government expenditure (% of GDP), 1990, 2013	19.6	18.0

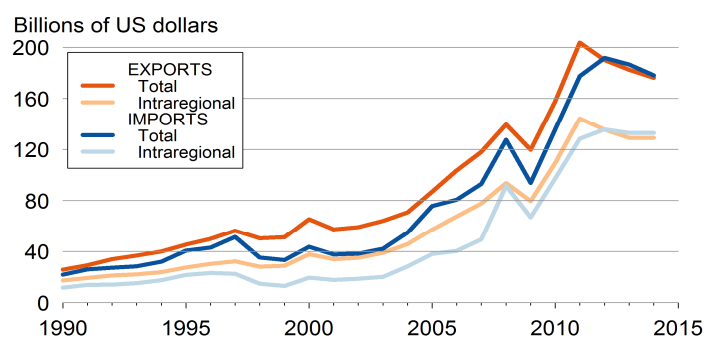
## Monetary measures

Inflation rate (% per annum), 1990, 2014	7.8	6.4
Exchange rate against US dollar, 1990, 2014	4.1	13.4
(% change per annum)		

## International trade

Exports of merchandise (% of GDP), 1990, 2014	20.4	19.3
Imports of merchandise (% of GDP), 1990, 2014	17.4	19.5
Exports of services (% of GDP), 2014	-	2.5
Imports of services (% of GDP), 2014	-	3.6

### Total and intraregional exports and imports, 1990 to 2013



## International financing

FDI inflows (% of GDP), 1990, 2014	0.9	2.5
FDI outflows (% of GDP), 1990, 2014	0.0	0.8
ODA received (% of GDP), 1990, 2013	1.4	0.0
Personal remittances rec'd (% of GDP), 1990, 2013	0.1	0.9
Net external debt (% of GDP), 1990, 2013	55.6	29.8