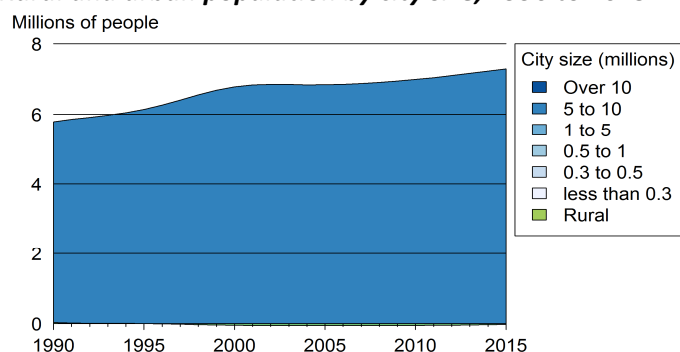


Hong Kong, China

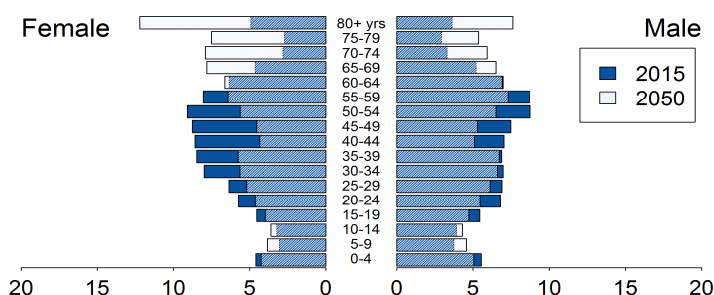
Demographic trends

Population size (millions), 1990, 2015	5.8	7.3
Average annual growth rate (%), 1990, 2015	1.2	0.8
Urban population (% of pop.), 1990, 2015	99.5	100.0
in cities over 1 million people	99.5	100.4
in cities from 0.3 to 1 million people	0.0	0.0
in cities < 0.3 million people	0.0	0.0
Population density (pop. per km ²)	-	-
Foreign population (% of pop.), 1990, 2013	38.3	38.9
Net migration rate (migrants per 1 000 pop.)	5.2	4.2
Life expectancy at birth (in years)	78.2	83.7
Total fertility rate, 1990, 2015	1.3	1.3
(Live births per woman)		
Adolescent fertility rate	7.0	3.5
(Live births per 1 000 women aged 15-19 years)		

Rural and urban population by city size, 1990 to 2015



Population age structure, 2015 and 2050



Poverty and inequalities

Population living in poverty (% of population)		
below 1.25 dollars (2005 PPP) a day	-	-
below 2 dollars (2005 PPP) a day	-	-
below national poverty line	-	-
Gini index (income equality coefficient)	-	-
Population with access to		
Improved water sources (% of pop.)		
Rural	-	-
Urban	-	-
Improved sanitation (% of pop.)		
Rural	-	-
Urban	-	-

Health

Mortality rate (deaths per 1 000 live births)		
Infant	-	-
Under-five	-	-
Children under-five underweight (%)	-	-
Maternal mortality ratio	-	-
(deaths per 100 000 live births)		
Antenatal care visit, at least one visit	-	-
(% of women with live births)		

Infant, child and maternal mortality rates, 1990 to 2013

No available data

Population living with HIV		
Total adults, number	-	-
AIDS deaths, number	-	-
HIV prevalence rate (% pop. 15-49 yrs)	-	-

Total health expenditure		
% of GDP	-	-
Current PPP dollars per capita	-	-
General government health expenditure		
% of government expenditure	-	-
Current PPP dollars per capita	-	-

Education

Gross enrolment (% of respective school age population)		
Primary education, 1999, 2013	96.5	104.5
Secondary education, 2013	-	99.3
Tertiary education, 2013	-	66.8
Adult literacy rate (% of pop. aged 15 yrs and above)		
Female	-	-
Male	-	-
Public expenditure on education		
% of GDP, 1990, 2013	2.5	3.8
% of total government expenditure, 2013	-	20.3
Public expenditure per pupil (% of GDP per capita)		
Primary, 2013	-	14.7
Secondary, 2013	-	19.0
Tertiary, 2012	-	30.4
Gross domestic expenditure on research/development		
% of GDP, 1999, 2012	0.5	0.7
Current PPP dollars per capita, 1999, 2012	111.7	375.5

Air pollution and climate change

Greenhouse gas emissions

Million tons CO ₂ -e _q , 1990, 2012	37.3	58.6
% change per annum, 1990, 2012	2.2	3.0
Tons CO ₂ -e _q per capita, 1990, 2012	6.4	8.3
Tons CO ₂ -e _q /1 000 US dollars GDP, 1990, 2012	0.5	0.2

CO₂ emissions from fuel combustion

Million tons CO ₂ -e _q , 1990, 2013	33.3	46.1
% change per annum, 1990, 2012	2.8	-1.3
Tons CO ₂ -e _q per capita, 1990, 2013	5.7	6.4
Grams CO ₂ -e _q /US dollar GDP, 1990, 2013	332.3	191.1

Water

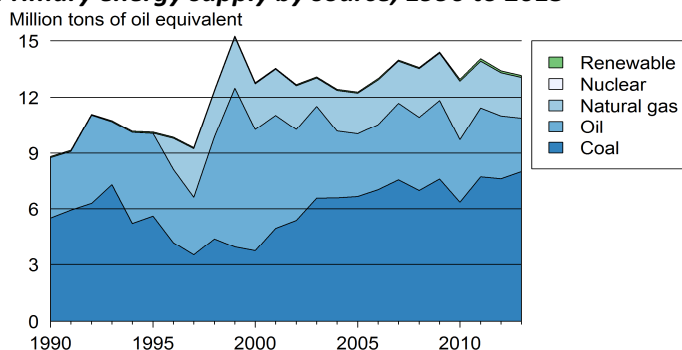
Renewable water available *	-	-
Domestic water withdrawal *	-	-
* (m ³ per capita per annum)		

Energy

Total primary energy supply (TPES) (kg of oil equivalent)

Per capita, 1990, 2013	1492.5	1944.7
Per 1 000 GDP 2005 US dollars, 1990, 2013	86.3	57.8
Renewable energy (% of TPES), 1990, 2012	0.5	0.8

Primary energy supply by source, 1990 to 2013



Biodiversity

Areas protected

Marine (% of territorial water), 1990, 2014	0.0	0.0
Terrestrial (% of surface area), 1990, 2014	41.1	41.8
Forest (% of land area)	-	-

Natural disasters

Deaths (number per annum), 1991, 2010	22	1
People affected (1 000 per annum), 1991, 2010	0	15
Economic damages (% of GDP), 1991, 2010	0.0	0.0

Connectivity

Mobile cellular subscriptions,* 2000, 2014	80.3	240.4
Internet users,* 2000, 2014	27.8	74.6
Fixed broadband internet subscribers,* 2000, 2014	6.6	31.4
* (per 100 population)		

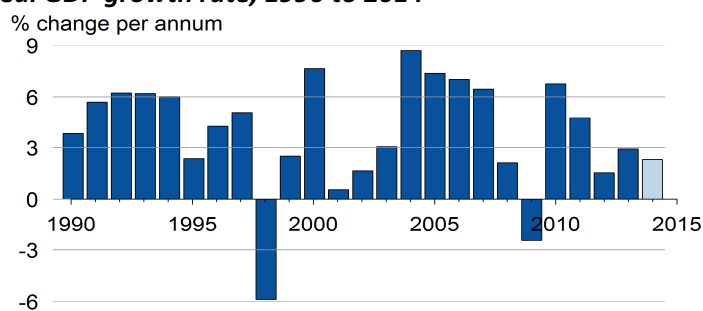
Railway density	-	-
Road density, 1990, 2011	1499.0	1986.7
Km of railway/road per 1 000 km ² land area		
Paved roads (% of roads), 1990, 2011	100.0	100.0
Passenger cars (per 1 000 pop.), 2000, 2011	49.9	61.5
Road traffic deaths (per 100 000 pop.)	-	-

Economic growth

Gross domestic product (GDP)

Constant, billion 2005 US dollars, 1990, 2014	100.2	247.8
Current US dollars per capita, 1990, 2013	13 277	38 251
2011 PPP per capita, 1990, 2013	26 565	51 678

Real GDP growth rate, 1990 to 2014 ^{1/}



^{1/} 2014: World Bank estimates

Employment

Employment-to-population ratio

% Population aged 15 and above, 1991, 2013	62.5	57.4
% Female aged 15 and above, 1991, 2013	47.2	50.4
% Male aged 15 and above, 1991, 2013	77.3	65.5
Unemployment rate (% of labour force), 1991, 2013	1.8	3.3
Female, 1991, 2013	1.6	2.8
Male, 1991, 2013	1.9	3.8
Youth unemployment rate		
% of labour force aged 15-24, 1991, 2013	4.1	9.1

Fiscal balance

Government revenue (% of GDP), 1990, 2013	14.9	21.1
Government expenditure (% of GDP), 1990, 2013	14.3	20.5

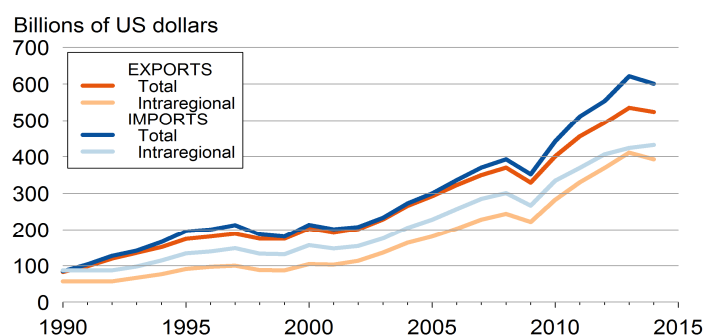
Monetary measures

Inflation rate (% per annum), 1990, 2014	10.2	4.4
Exchange rate against US dollar, 1990, 2014	-0.1	0.0
(% change per annum)		

International trade

Exports of merchandise (% of GDP), 1990, 2014	107.1	186.9
Imports of merchandise (% of GDP), 1990, 2014	110.1	214.2
Exports of services (% of GDP), 2014	-	37.8
Imports of services (% of GDP), 2014	-	27.0

Total and intraregional exports and imports, 1990 to 2013



International financing

FDI inflows (% of GDP), 1990, 2014	4.3	36.8
FDI outflows (% of GDP), 1990, 2014	3.2	50.9
ODA received (% of GDP), 1990	0.0	-
Personal remittances rec'd (% of GDP), 1998, 2014	0.1	0.1
Net external debt (% of GDP)	-	-