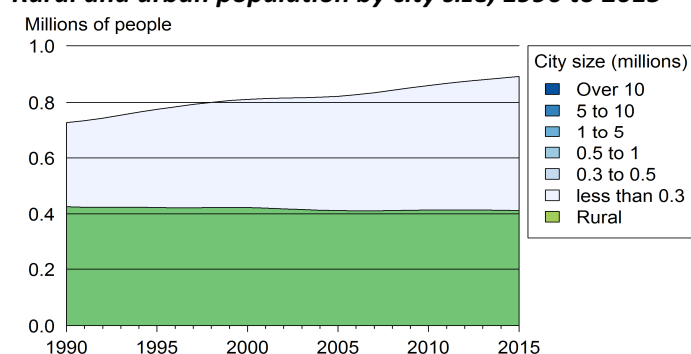


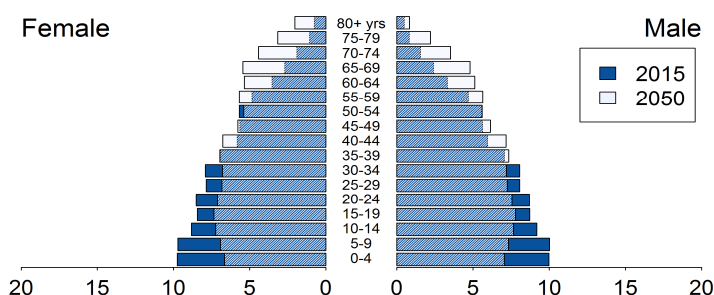
Demographic trends

Population size (thousands), 1990, 2015	728.6	892.1
Average annual growth rate (%), 1990, 2015	0.7	0.6
Urban population (% of pop.), 1990, 2015	41.6	53.8
in cities over 1 million people	0.0	0.0
in cities from 0.3 to 1 million people	0.0	0.0
in cities < 0.3 million people	41.6	53.8
Population density (pop. per km ²), 1990, 2012	39.9	47.8
Foreign population (% of pop.), 1990, 2013	1.9	2.6
Net migration rate (migrants per 1 000 pop.)	-9.5	-6.6
Life expectancy at birth (in years)	66.1	69.7
Total fertility rate, 1990, 2015 (Live births per woman)	3.4	2.5
Adolescent fertility rate (Live births per 1 000 women aged 15-19 years)	62.9	42.9

Rural and urban population by city size, 1990 to 2015



Population age structure, 2015 and 2050



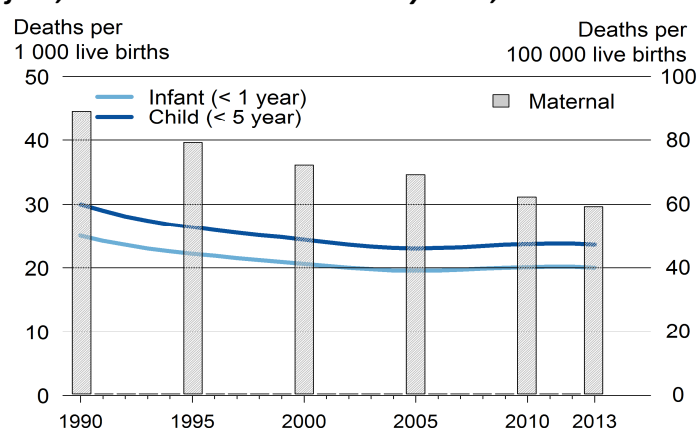
Poverty and inequalities

Population living in poverty (% of population)		
below 1.25 dollars (2005 PPP) a day, 2008	-	5.9
below 2 dollars (2005 PPP) a day, 2008	-	22.9
below national poverty line, 2008	-	35.2
Gini index (income equality coefficient), 2008	-	42.8
Population with access to		
Improved water sources (% of pop.)		
Rural, 1990, 2015	80	91
Urban, 1990, 2015	94	100
Improved sanitation (% of pop.)		
Rural, 1990, 2015	37	88
Urban, 1990, 2015	85	93

Health

Mortality rate (deaths per 1 000 live births)		
Infant, 1990, 2013	25	20
Under-five, 1990, 2013	30	23.6
Children under-five underweight (%), 1993, 2004	6.9	5.3
Maternal mortality ratio, 1990, 2013 (deaths per 100 000 live births)	89	59
Antenatal care visit, at least one visit, 2008 (% of women with live births)	-	100

Infant, child and maternal mortality rates, 1990 to 2013



Population living with HIV

Total adults, number, 1990, 2013	16	530
AIDS deaths, number, 1990, 2013	0.2	16
HIV prevalence rate (% pop. 15-49 yrs), 1990, 2013	0.0	0.1

Total health expenditure

% of GDP, 1995, 2013	3.1	4.1
Current PPP dollars per capita, 1995, 2012	92.7	197.1
General government health expenditure		
% of government expenditure, 1995, 2013	9.5	8.9
Current PPP dollars per capita, 1995, 2011	73.3	124.7

Education

Gross enrolment (% of respective school age population)		
Primary education, 1999, 2012	103.8	104.6
Secondary education, 1999, 2012	78.4	88.3
Tertiary education, 2005	-	16.1
Adult literacy rate (% of pop. aged 15 yrs and above)		
Female	-	-
Male	-	-
Public expenditure on education		
% of GDP, 1998, 2011	5.5	4.3
% of total government expenditure, 1998, 2011	17.9	14.9
Public expenditure per pupil (% of GDP per capita)		
Primary, 2011	-	16.4
Secondary, 2011	-	5.9
Tertiary, 2004	-	62.8
Gross domestic expenditure on research/development		
% of GDP	-	-
Current PPP dollars per capita	-	-

Air pollution and climate change

Greenhouse gas emissions		
Million tons CO ₂ -e _q , 1990, 2012	2.3	2.3
% change per annum, 1990, 2012	6.4	2.0
Tons CO ₂ -e _q , per capita, 1990, 2012	3.2	2.6
Tons CO ₂ -e _q /1 000 US dollars GDP, 1990, 2012	1.7	0.6
CO ₂ emissions from fuel combustion		
Million tons CO ₂ -e _q	-	-
% change per annum	-	-
Tons CO ₂ -e _q , per capita	-	-
Grams CO ₂ -e _q /US dollar GDP	-	-

Water

Renewable water available *, 1992, 2014	38 346	32 207
Domestic water withdrawal *, 2000, 2005	28.2	30.8
* (m ³ per capita per annum)		

Energy

Total primary energy supply (TPES) (kg of oil equivalent)		
Per capita	-	-
Per 1 000 GDP 2005 US dollars	-	-
Renewable energy (% of TPES)	-	-

Primary energy supply by source, 1990 to 2013

No available data

Biodiversity

Areas protected		
Marine (% of territorial water), 1990, 2014	0.2	6.2
Terrestrial (% of surface area), 1990, 2014	1.2	4.4
Forest (% of land area), 1990, 2012	52.2	55.9

Natural disasters

Deaths (number per annum), 1990, 2012	0	17
People affected (1 000 per annum), 1990, 2012	3	28
Economic damages (% of GDP), 1990, 2012	0.7	2.5

Connectivity

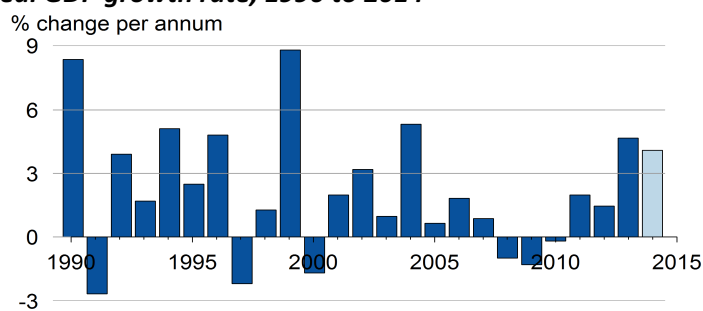
Mobile cellular subscriptions,* 2000, 2014	6.8	98.8
Internet users,* 2000, 2014	1.5	41.8
Fixed broadband internet subscribers,* 2014	-	1.4
* (per 100 population)		

Railway density	-	-
Road density, 1990, 2000	166.9	188.3
Km of railway/road per 1 000 km ² land area		
Paved roads (% of roads), 1990, 2000	44.5	49.0
Passenger cars (per 1 000 pop.), 2000, 2010	75.1	118.3
Road traffic deaths (per 100 000 pop.), 2013	-	5.8

Economic growth

Gross domestic product (GDP)		
Constant, billion 2005 US dollars, 1990, 2014	2.2	3.7
Current US dollars per capita, 1990, 2013	1 854	4 581
2011 PPP per capita, 1990, 2013	5 691	7 507

Real GDP growth rate, 1990 to 2014 ^{1/}



^{1/} 2014: World Bank estimates

Employment

Employment-to-population ratio		
% Population aged 15 and above, 1991, 2013	53.6	50.6
% Female aged 15 and above, 1991, 2013	27.9	33.3
% Male aged 15 and above, 1991, 2013	78.8	67.4
Unemployment rate (% of labour force), 1991, 2013	5.9	8.1
Female, 1991, 2013	8.6	11.4
Male, 1991, 2013	4.9	6.4
Youth unemployment rate		
% of labour force aged 15-24, 1991, 2013	12.6	19.2

Fiscal balance

Government revenue (% of GDP), 1990, 2012	28.1	27.9
Government expenditure (% of GDP), 1990, 2012	29.8	29.2

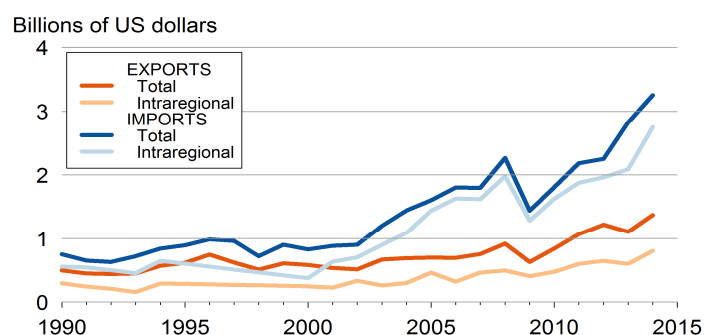
Monetary measures

Inflation rate (% per annum), 1990, 2014	8.2	0.5
Exchange rate against US dollar, 1990, 2014	-0.2	2.5
(% change per annum)		

International trade

Exports of merchandise (% of GDP), 1990, 2014	36.8	32.7
Imports of merchandise (% of GDP), 1990, 2014	55.8	77.4
Exports of services (% of GDP), 2014	-	27.6
Imports of services (% of GDP), 2014	-	13.4

Total and intraregional exports and imports, 1990 to 2013



International financing

FDI inflows (% of GDP), 1990, 2014	6.2	6.6
FDI outflows (% of GDP), 1990, 2014	0.2	0.0
ODA received (% of GDP), 1990, 2013	3.7	2.3
Personal remittances rec'd (% of GDP), 1990, 2013	1.6	5.0
Net external debt (% of GDP), 1990, 2013	22.8	19.8