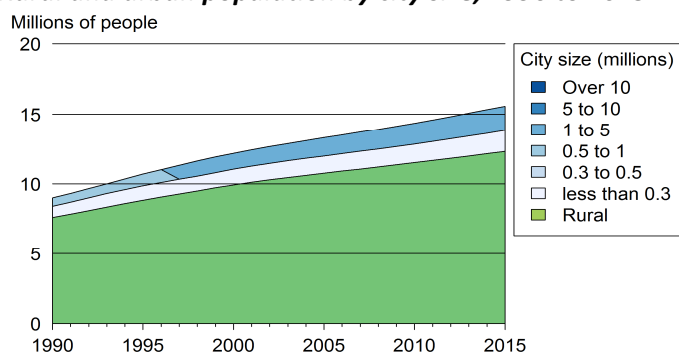


# Cambodia

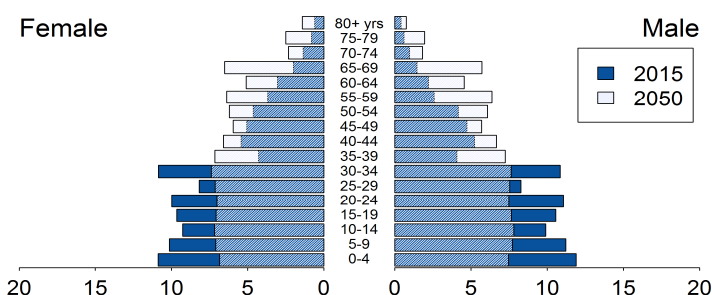
## Demographic trends

Population size (millions), 1990, 2015	9.0	15.6
Average annual growth rate (%), 1990, 2015	3.3	1.6
Urban population (% of pop.), 1990, 2015	15.6	20.9
in cities over 1 million people	0.0	11.1
in cities from 0.3 to 1 million people	6.8	0.0
in cities < 0.3 million people	8.8	9.7
Population density (pop. per km <sup>2</sup> ), 1990, 2012	49.8	81.9
Foreign population (% of pop.), 1990, 2013	0.4	0.5
Net migration rate (migrants per 1 000 pop.)	8.3	-2.0
Life expectancy at birth (in years)	54.3	67.6
Total fertility rate, 1990, 2015 (Live births per woman)	5.6	2.6
Adolescent fertility rate (Live births per 1 000 women aged 15-19 years)	66.8	48.8

## Rural and urban population by city size, 1990 to 2015



## Population age structure, 2015 and 2050



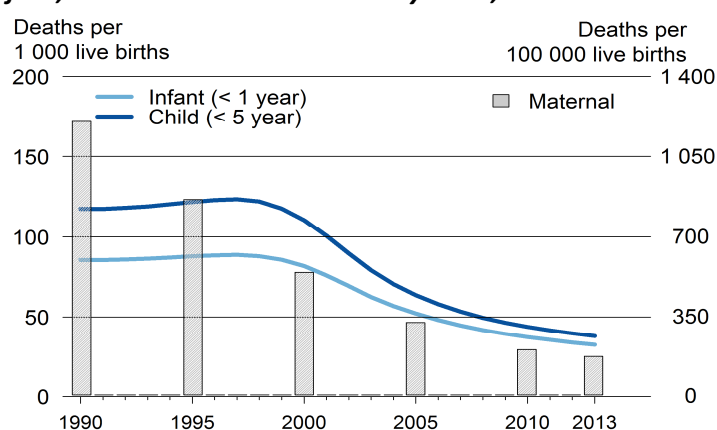
## Poverty and inequalities

Population living in poverty (% of population)		
below 1.25 dollars (2005 PPP) a day, 1994, 2011	44.5	10.1
below 2 dollars (2005 PPP) a day, 1994, 2011	75.2	41.3
below national poverty line, 2012	-	17.7
Gini index (income equality coefficient), 1994, 2011	38.3	31.8
Population with access to		
Improved water sources (% of pop.)		
Rural, 1990, 2015	22	69
Urban, 1990, 2015	34	100
Improved sanitation (% of pop.)		
Rural, 1993, 2015	1	31
Urban, 1990, 2015	19	88

## Health

Mortality rate (deaths per 1 000 live births)		
Infant, 1990, 2013	85.6	32.5
Under-five, 1990, 2013	117.5	37.9
Children under-five underweight (%), 1996, 2010	42.6	29
Maternal mortality ratio, 1990, 2013 (deaths per 100 000 live births)	1200	170
Antenatal care visit, at least one visit, 1998, 2014 (% of women with live births)	34.3	95.3

## Infant, child and maternal mortality rates, 1990 to 2013



## Population living with HIV

Total adults, number, 1990, 2013	1052	75248
AIDS deaths, number, 1990, 2013	5.0	2161
HIV prevalence rate (% pop. 15-49 yrs), 1990, 2013	0.0	0.7

## Total health expenditure

% of GDP, 1995, 2013	5.3	7.5
Current PPP dollars per capita, 1995, 2012	42.0	135.3
General government health expenditure		
% of government expenditure, 1995, 2013	7.1	7.7
Current PPP dollars per capita, 1995, 2011	6.9	30.3

## Education

Gross enrolment (% of respective school age population)		
Primary education, 1999, 2013	101.0	124.5
Secondary education, 1999, 2008	16.3	45.0
Tertiary education, 2000, 2011	2.5	15.8
Adult literacy rate (% of pop. aged 15 yrs and above)		
Female, 1998, 2015	57.0	70.5
Male, 1998, 2015	79.5	84.5
Public expenditure on education		
% of GDP, 1998, 2010	1.3	2.6
% of total government expenditure, 1998, 2010	9.4	13.1
Public expenditure per pupil (% of GDP per capita)		
Primary, 1998, 2010	5.1	6.9
Secondary, 1998, 2001	10.9	6.1
Tertiary, 2010	-	27.8
Gross domestic expenditure on research/development		
% of GDP, 2002	-	0.0
Current PPP dollars per capita, 2002	-	0.6

## Air pollution and climate change

### Greenhouse gas emissions

Million tons CO <sub>2</sub> -e <sub>q</sub> , 1990, 2012	19.5	127.4
% change per annum, 1990, 2012	13.2	0.4
Tons CO <sub>2</sub> -e <sub>q</sub> per capita, 1990, 2012	2.2	8.6
Tons CO <sub>2</sub> -e <sub>q</sub> /1 000 US dollars GDP, 1990, 2012	11.5	9.1

### CO<sub>2</sub> emissions from fuel combustion

Million tons CO <sub>2</sub> -e <sub>q</sub> , 1995, 2013	1.5	5.2
% change per annum, 1996, 2012	4.1	3.5
Tons CO <sub>2</sub> -e <sub>q</sub> per capita, 1995, 2013	0.1	0.3
Grams CO <sub>2</sub> -e <sub>q</sub> /US dollar GDP, 1995, 2013	515.5	482.6

## Water

Renewable water available *, 1992, 2014	49 290	31 061
Domestic water withdrawal *, 2006	-	7.2
* (m <sup>3</sup> per capita per annum)		

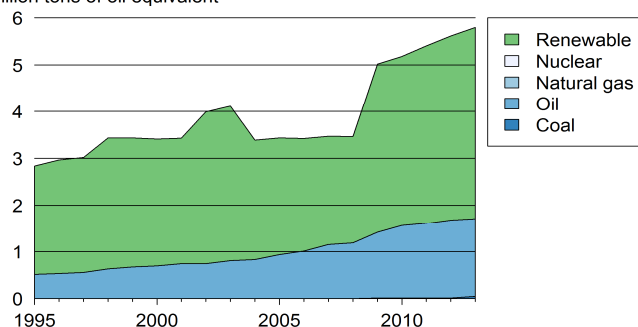
## Energy

### Total primary energy supply (TPES) (kg of oil equivalent)

Per capita, 1995, 2013	265.2	396.2
Per 1 000 GDP 2005 US dollars, 1995, 2013	994.8	556.5
Renewable energy (% of TPES), 1995, 2012	82.0	71.8

### Primary energy supply by source, 1990 to 2013

Million tons of oil equivalent



## Biodiversity

### Areas protected

Marine (% of territorial water), 1990, 2014	0.0	0.5
Terrestrial (% of surface area), 1990, 2014	0.0	26.0
Forest (% of land area), 1990, 2012	73.3	55.7

## Natural disasters

Deaths (number per annum), 1991, 2014	100	45
People affected (1 000 per annum), 1991, 2014	650	473
Economic damages (% of GDP), 1991, 2014	6.7	0.0

## Connectivity

Mobile cellular subscriptions,* 2000, 2014	1.1	155.9
Internet users,* 2000, 2014	0.0	9.0
Fixed broadband internet subscribers,* 2014	-	0.2
* (per 100 population)		

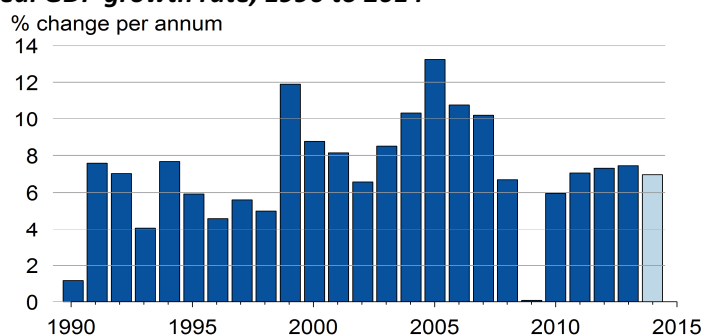
Railway density, 1990, 2005	3.4	3.7
Road density, 1990, 2009	202.8	224.4
Km of railway/road per 1 000 km <sup>2</sup> land area		
Paved roads (% of roads), 1990, 2004	7.5	6.3
Passenger cars (per 1 000 pop.), 2000, 2005	15.6	18.5
Road traffic deaths (per 100 000 pop.), 2013	-	17.4

## Economic growth

### Gross domestic product (GDP)

Constant, billion 2005 US dollars, 1990, 2014	2.1	11.5
Current US dollars per capita, 1990, 2013	188	1 011
2011 PPP per capita, 1993, 2013	1 011	2 955

### Real GDP growth rate, 1990 to 2014 <sup>1/</sup>



<sup>1/</sup> 2014: World Bank estimates

## Employment

### Employment-to-population ratio

% Population aged 15 and above, 1991, 2013	79.8	83.7
% Female aged 15 and above, 1991, 2013	76.6	80.0
% Male aged 15 and above, 1991, 2013	83.4	87.8
Unemployment rate (% of labour force), 1991, 2013	0.5	0.3
Female, 1991, 2013	0.6	0.3
Male, 1991, 2013	0.5	0.3
Youth unemployment rate		
% of labour force aged 15-24, 1991, 2013	1.3	0.7

## Fiscal balance

Government revenue (% of GDP), 1991, 2013	4.4	14.9
Government expenditure (% of GDP), 1991, 2013	7.8	19.9

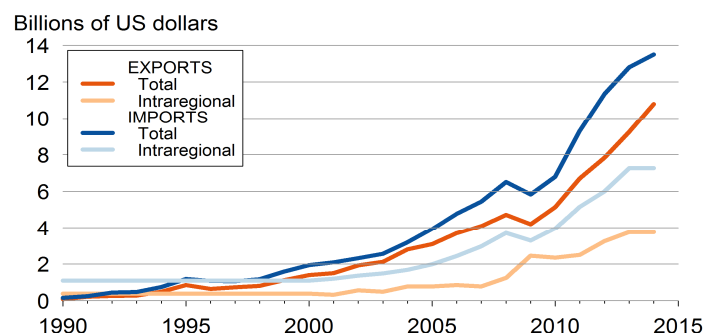
## Monetary measures

Inflation rate (% per annum), 1995, 2014	-0.8	3.9
Exchange rate against US dollar, 1990-2000, 2014	80.1	0.3
(% change per annum)		

## International trade

Exports of merchandise (% of GDP), 1990, 2014	5.1	66.2
Imports of merchandise (% of GDP), 1990, 2014	9.7	82.8
Exports of services (% of GDP), 2014	-	24.0
Imports of services (% of GDP), 2014	-	12.2

### Total and intraregional exports and imports, 1990 to 2013



## International financing

FDI inflows (% of GDP), 1990, 2014	0.0	10.6
FDI outflows (% of GDP), 1990, 2014	0.0	0.2
ODA received (% of GDP), 1990, 2013	2.4	5.3
Personal remittances rec'd (% of GDP), 1992, 2013	0.4	1.2
Net external debt (% of GDP), 1990, 2013	108.7	42.1