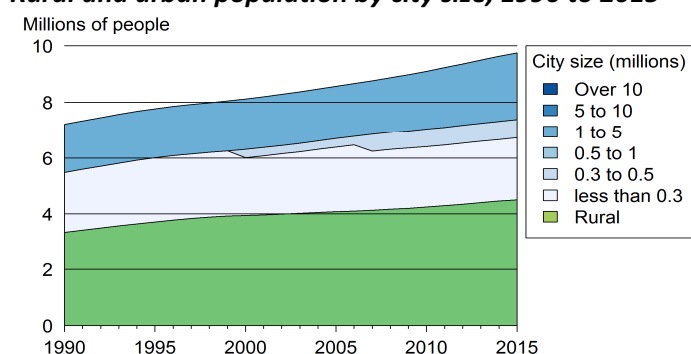


Azerbaijan

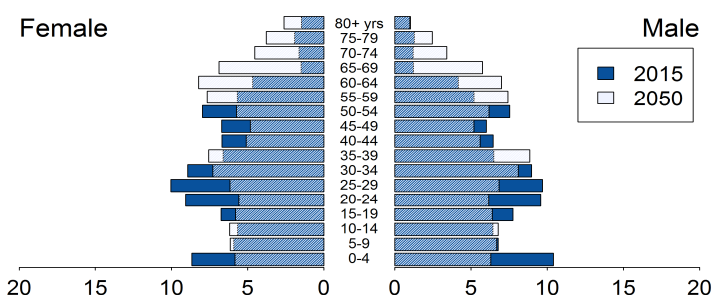
Demographic trends

Population size (millions), 1990, 2015	7.2	9.8
Average annual growth rate (%), 1990, 2015	1.6	1.2
Urban population (% of pop.), 1990, 2015	53.7	53.8
in cities over 1 million people	24.0	24.3
in cities from 0.3 to 1 million people	0.0	6.7
in cities < 0.3 million people	29.7	22.8
Population density (pop. per km ²), 1992, 2012	86.0	108.1
Foreign population (% of pop.), 1990, 2013	5.0	3.4
Net migration rate (migrants per 1 000 pop.)	-2.8	-0.3
Life expectancy at birth (in years)	63.8	70.6
Total fertility rate, 1990, 2015 (Live births per woman)	3.0	2.3
Adolescent fertility rate (Live births per 1 000 women aged 15-19 years)	37.5	53.7

Rural and urban population by city size, 1990 to 2015



Population age structure, 2015 and 2050



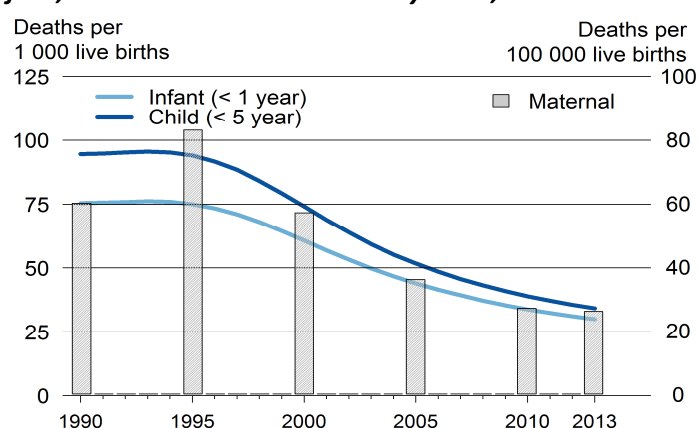
Poverty and inequalities

Population living in poverty (% of population)		
below 1.25 dollars (2005 PPP) a day, 1995, 2008	25.2	0.3
below 2 dollars (2005 PPP) a day, 1995, 2008	53.9	2.4
below national poverty line, 2013	-	5.3
Gini index (income equality coefficient), 1995, 2008	35.0	33.0
Population with access to		
Improved water sources (% of pop.)		
Rural, 1990, 2015	50	78
Urban, 1990, 2015	85	95
Improved sanitation (% of pop.)		
Rural, 1994, 2015	49	87
Urban, 1994, 2015	75	92

Health

Mortality rate (deaths per 1 000 live births)		
Infant, 1990, 2013	75.4	29.9
Under-five, 1990, 2013	94.5	34.2
Children under-five underweight (%), 1996, 2006	8.8	8.4
Maternal mortality ratio, 1990, 2013 (deaths per 100 000 live births)	60	26
Antenatal care visit, at least one visit, 1997, 2011 (% of women with live births)	98.3	91.7

Infant, child and maternal mortality rates, 1990 to 2013



Population living with HIV

Total adults, number, 1990, 2013	25	9184
AIDS deaths, number, 1990, 2013	0.5	537
HIV prevalence rate (% pop. 15-49 yrs), 1990, 2013	0.0	0.2

Total health expenditure

% of GDP, 1995, 2013	5.8	5.6
Current PPP dollars per capita, 1995, 2012	86.4	572.3
General government health expenditure		
% of government expenditure, 1995, 2013	6.9	3.5
Current PPP dollars per capita, 1995, 2011	20.8	112.3

Education

Gross enrolment (% of respective school age population)		
Primary education, 1999, 2012	95.5	98.0
Secondary education, 2012	-	100.3
Tertiary education, 2012	-	20.4
Adult literacy rate (% of pop. aged 15 yrs and above)		
Female, 1999, 2015	98.2	99.7
Male, 1999, 2015	99.5	99.9
Public expenditure on education		
% of GDP, 1992, 2011	6.1	2.4
% of total government expenditure, 2000, 2011	18.5	7.3
Public expenditure per pupil (% of GDP per capita)		
Primary	-	-
Secondary	-	-
Tertiary, 2011	-	18.0
Gross domestic expenditure on research/development		
% of GDP, 1999, 2013	0.4	0.2
Current PPP dollars per capita, 1999, 2013	12.2	35.9

Air pollution and climate change

Greenhouse gas emissions

Million tons CO ₂ -e _q , 1990, 2012	78.1	56.5
% change per annum, 1990, 2012	20.5	4.7
Tons CO ₂ -e _q , per capita, 1990, 2012	10.8	6.0
Tons CO ₂ -e _q /1 000 US dollars GDP, 1990, 2012	12.0	0.8

CO₂ emissions from fuel combustion

Million tons CO ₂ -e _q , 1990, 2013	53.5	29.5
% change per annum, 1991, 2012	-1.7	9.3
Tons CO ₂ -e _q , per capita, 1990, 2013	7.4	3.1
Grams CO ₂ -e _q /US dollar GDP, 1990, 2013	4403.1	978.2

Water

Renewable water available *, 1992, 2014	4 654	3 601
Domestic water withdrawal *, 1997, 2005	28.0	60.8
* (m ³ per capita per annum)		

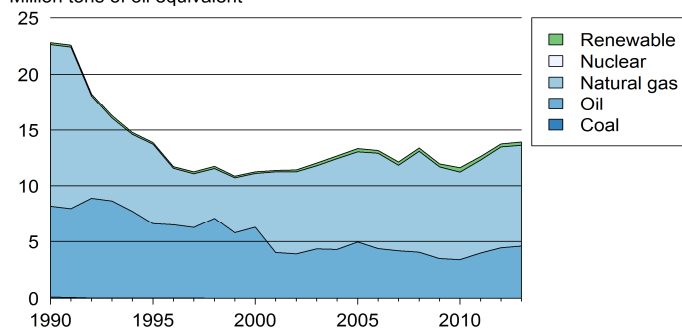
Energy

Total primary energy supply (TPES) (kg of oil equivalent)

Per capita, 1990, 2013	3140.3	1461.5
Per 1 000 GDP 2005 US dollars, 1990, 2013	1866.1	461.0
Renewable energy (% of TPES), 1990, 2012	0.7	1.9

Primary energy supply by source, 1990 to 2013

Million tons of oil equivalent



Biodiversity

Areas protected

Marine (% of territorial water), 1990, 2014	0.0	0.0
Terrestrial (% of surface area), 1990, 2014	5.2	14.0
Forest (% of land area), 1992, 2012	11.2	11.3

Natural disasters

Deaths (number per annum), 1995, 2012	5	5
People affected (1 000 per annum), 1995, 2012	1 503	16
Economic damages (% of GDP), 1995, 2012	0.5	0.0

Connectivity

Mobile cellular subscriptions,* 2000, 2014	5.2	109.6
Internet users,* 2000, 2014	0.1	61.0
Fixed broadband internet subscribers,* 2014	-	19.6
* (per 100 population)		

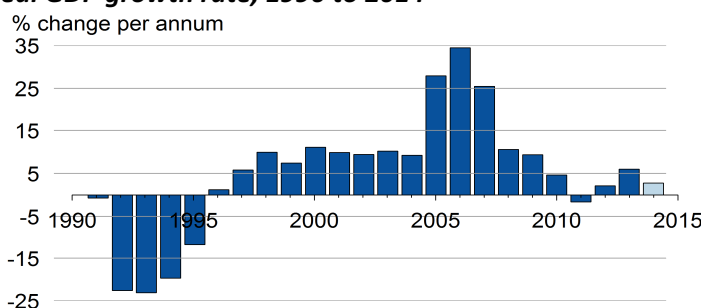
Railway density, 1998, 2012	25.5	25.0
Road density, 2000, 2011	227.1	229.7
Km of railway/road per 1 000 km ² land area		
Paved roads (% of roads), 2000, 2011	52.0	55.6
Passenger cars (per 1 000 pop.), 2000, 2011	41.3	95.0
Road traffic deaths (per 100 000 pop.), 2013	-	10.0

Economic growth

Gross domestic product (GDP)

Constant, billion 2005 US dollars, 1990, 2014	12.1	30.9
Current US dollars per capita, 1990, 2013	904	7 745
2011 PPP per capita, 1990, 2013	8 445	16 452

Real GDP growth rate, 1990 to 2014 ^{1/}



^{1/} 2014: World Bank estimates

Employment

Employment-to-population ratio

% Population aged 15 and above, 1991, 2013	59.1	61.9
% Female aged 15 and above, 1991, 2013	51.1	58.1
% Male aged 15 and above, 1991, 2013	67.7	65.8
Unemployment rate (% of labour force), 1991, 2013	5	5.5
Female, 1991, 2013	5.8	6.6
Male, 1991, 2013	4.3	4.4
Youth unemployment rate		
% of labour force aged 15-24, 1991, 2013	11.8	14.8

Fiscal balance

Government revenue (% of GDP), 1990, 2013	34.1	33.8
Government expenditure (% of GDP), 1992, 2013	28.7	31.6

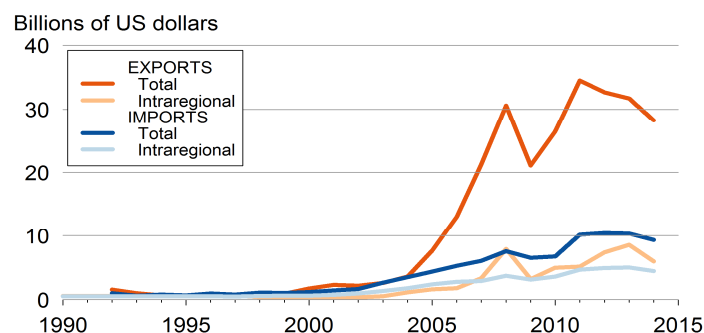
Monetary measures

Inflation rate (% per annum), 1992, 2014	-10.6	1.4
Exchange rate against US dollar, 1993, 2014	84.5	0.0
(% change per annum)		

International trade

Exports of merchandise (% of GDP), 1992, 2014	29.7	37.4
Imports of merchandise (% of GDP), 1992, 2014	18.8	12.3
Exports of services (% of GDP), 2014	-	5.6
Imports of services (% of GDP), 2014	-	13.5

Total and intraregional exports and imports, 1990 to 2013



International financing

FDI inflows (% of GDP), 1992, 2014	0.0	5.9
FDI outflows (% of GDP), 1992, 2014	0.0	2.9
ODA received (% of GDP), 1991, 2013	0.0	-0.1
Personal remittances rec'd (% of GDP), 1995, 2014	0.1	2.4
Net external debt (% of GDP), 1993, 2013	0.9	12.5