

CMIP6 Climate Projection Tool

[Go to ClimoCast](#) →

ClimoCast

With ClimoCast you can see future climate projections on the map, compare climate scenarios and download the data.

Yuji Masutomi

Center for Climate Change Adaptation,
National Institute for Environmental Studies



National
Institute for
Environmental
Studies, Japan



CMIP6 Climate Projection Tool

[Go to ClimoCast](#) →

ClimoCast

With ClimoCast you can see future climate projections on the map, compare climate scenarios and download the data.

Main concept: ***Climate Projections for ALL***

We deliver latest climate projections to **everyone**.

Sub concept: **Quick and easy access**

By using ClimoCast, you can climate projections the fastest and easiest.

Goals and approach for training

- 【Minimum】 : You can recognize and remember **ClimoCast**
- 【Intermediate】 : You can get climate data through **ClimoCast**
- 【Final】 : You use **ClimoCast** in your work

- Approach





CMIP6 Climate Projection Tool

Go to ClimoCast →

ClimoCast

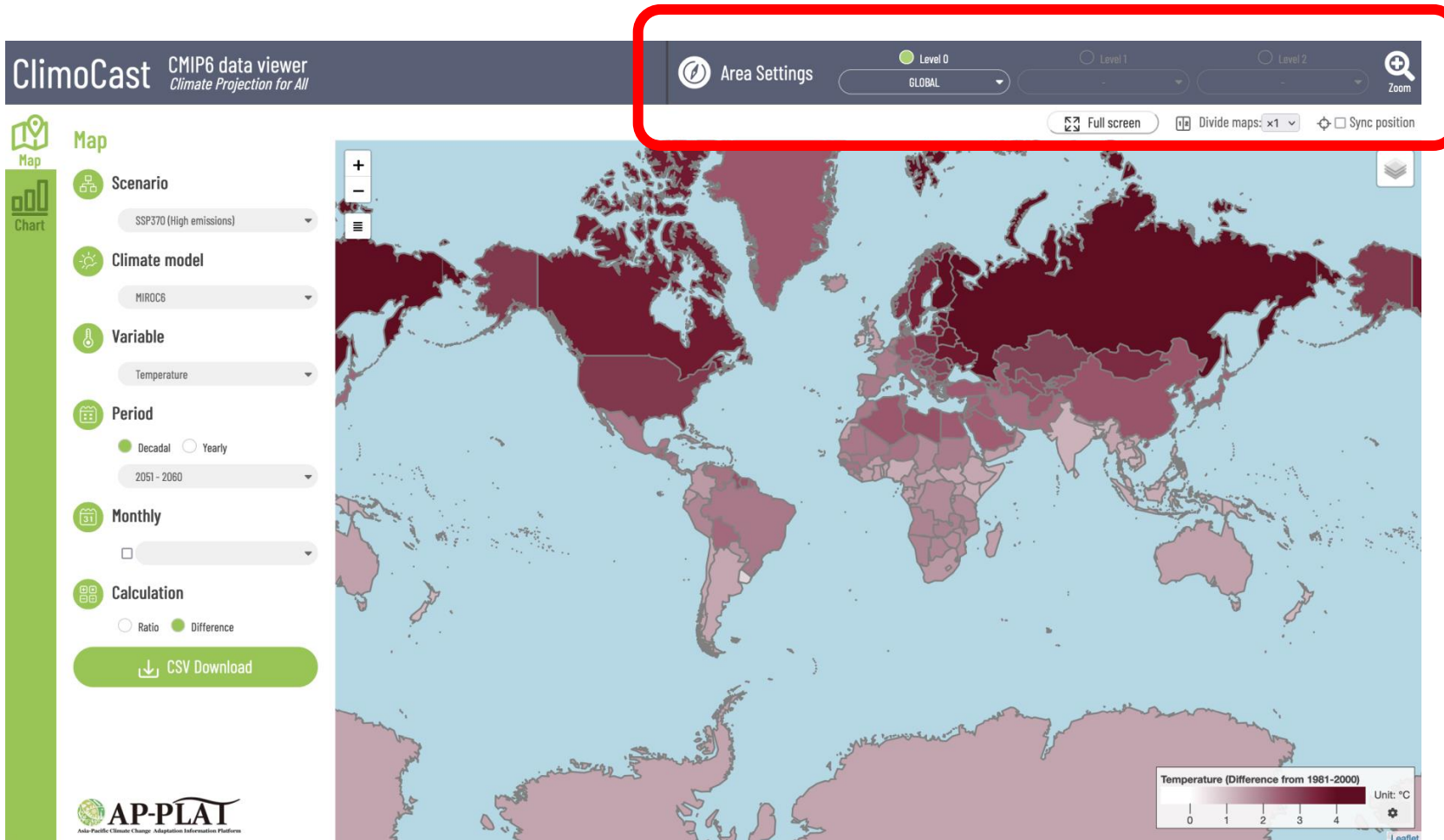
With ClimoCast you can see future climate projections on the map, compare climate scenarios and download the data.

Step0: Go to ClimoCast!!

Search “ClimoCast” in Google and click it

or <https://a-plat.nies.go.jp/ap-plat/cmip6/global.html>

STEP 1-1: Area setting

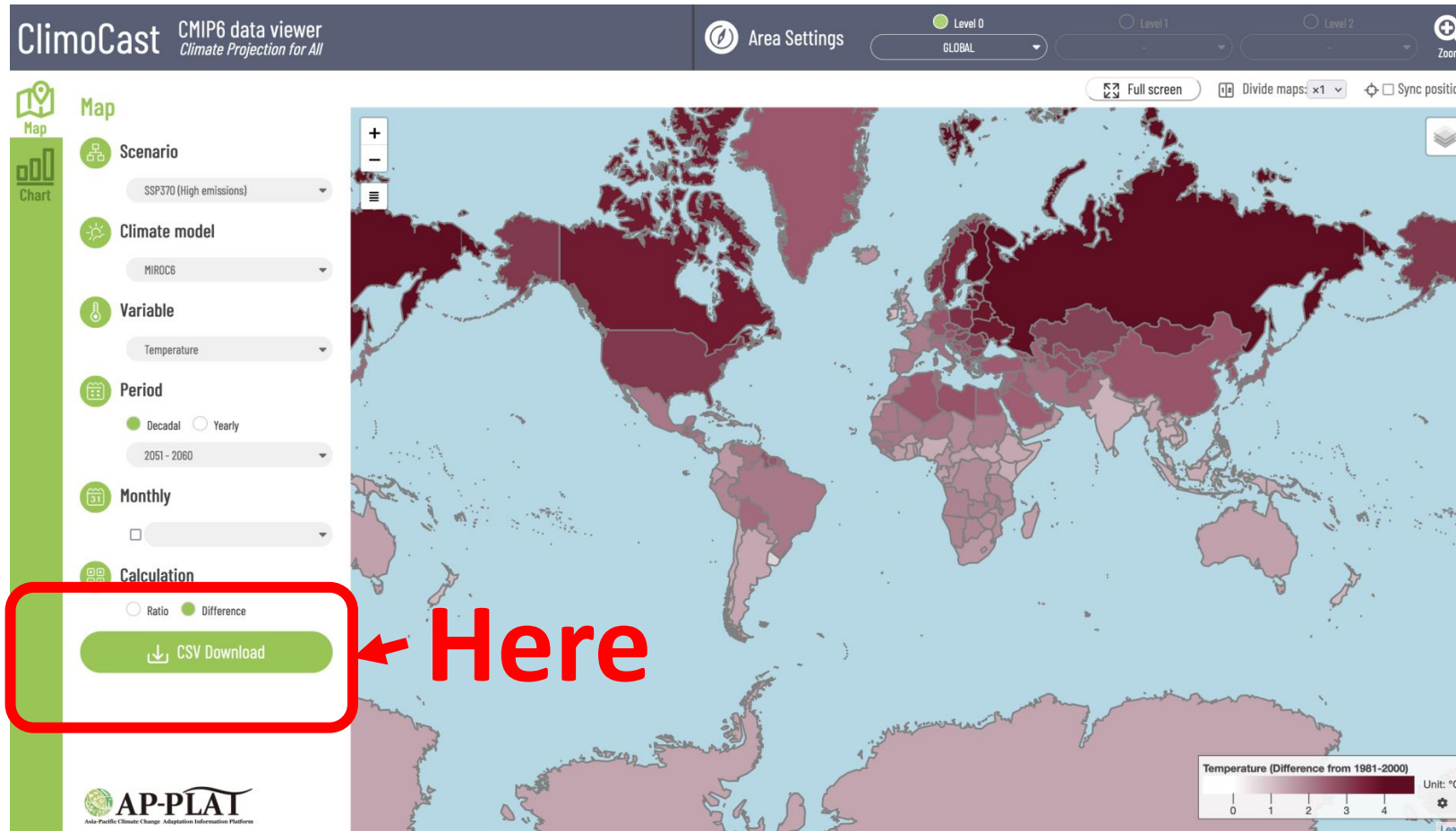


← Here

Level0: Country
Level1: Province
Level2: City

Sorry, for Maldives, no level 1 and 2

STEP 1-2: Click “CSV Download”



- Save it to your PC and open it.

The value shows **temperature increase** in your town!!



CMIP6 Climate Projection Tool

[Go to ClimoCast](#) →

ClimoCast

With ClimoCast you can see future climate projections on the map, compare climate scenarios and download the data.

Exercise 1: Answer temperature increase in your town

STEP2: Change setting

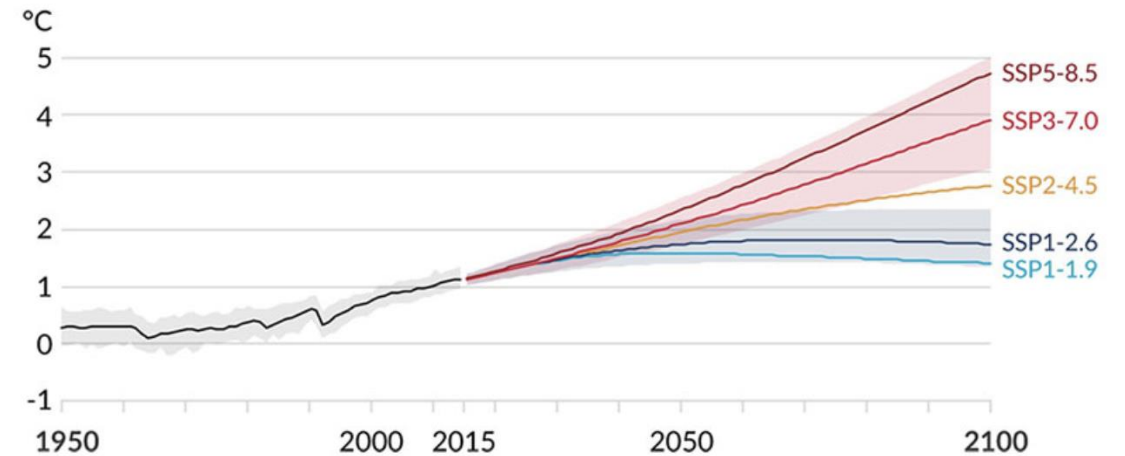
① Emission scenario

- SSP126: Low
- SSP245: Intermediate
- SSP370: High
- SSP585: Very high

② Climate model (10 Climate models)

- There are many climate projections provided by different climate models.
- 10 Climate model projections are included in ClimoCast.
- Different climate models show different climate projections.
- It is impossible to know best or worst models at this stage.
 - You must not ask which one is best?
 - **Climate model uncertainty**

a) Global surface temperature change relative to 1850-1900



STEP2: Change setting

③ Variable

- Average temperature
- Minimum temperature
- Maximum temperature
- Precipitation

④ Period

- decadal or yearly
- 1981-2000

⑤ Monthly

- You can select Jun-Dec if you check

⑥ Calculation

- Ratio: ratio to 1981-2000 (for precipitation)
- Difference: difference from 1981-2000 (for temperature)

Here

ClimoCast CMIP6 data viewer
Climate Projection for All

Map

Chart

Scenario
SSP370 (High emissions)

Climate model
MIROC6

Variable
Temperature

Period
 Decadal Yearly
2051 - 2060

Monthly

Calculation
 Ratio Difference

↓ CSV Download

AP-PLAT
Asia-Pacific Climate Change Adaptation Information Platform

Exercise 2-1 (Emission scenario)

- i: Answer how much degree will maximum temperature (Variable) increase in your town in 2091-2100 (Period) under SSP126 (Emission scenario) according to MIROC6 (Climate model)?
- ii: Answer how much degree will maximum temperature (Variable) increase in your town in 2091-2100 (Period) under SSP370 (Emission scenario) according to MIROC6 (Climate model)?
- iii: Which emission scenario show higher maximum temp. increase and how much is the difference?
 - **It shows the effect of mitigation!!**

Exercise 2-2 (Climate model)

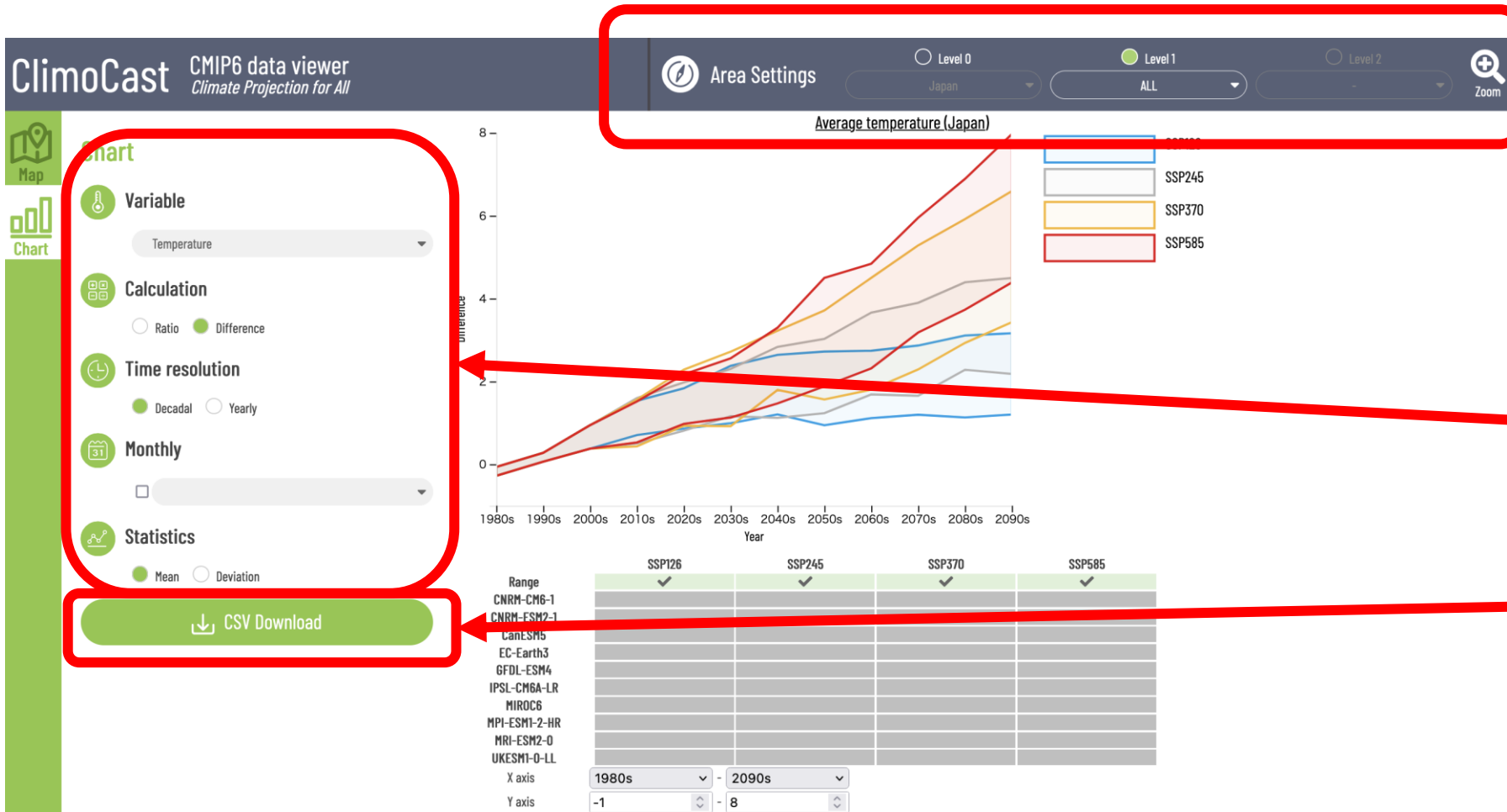
- i: Answer how much degree will maximum temperature (**Variable**) increase in your town in 2091-2100 (**Period**) under SSP370 (**Emission scenario**) according to **UKESM1-0-LL (Climate model)?**
- ii: Which climate model (MIROC and UKESM1-0-LL) show higher maximum temp. increase and how much is the difference?

STEP3: Chart mode



- The graph shows each projection of climate models and emission scenarios
- You can understand climate change over time through the graph.
- You can download all projection data for the area you selected.
 - You can analyze the data
 - You can make tables and figures in your favorite style.

STEP3: Chart mode



① Area setting

② Chart setting

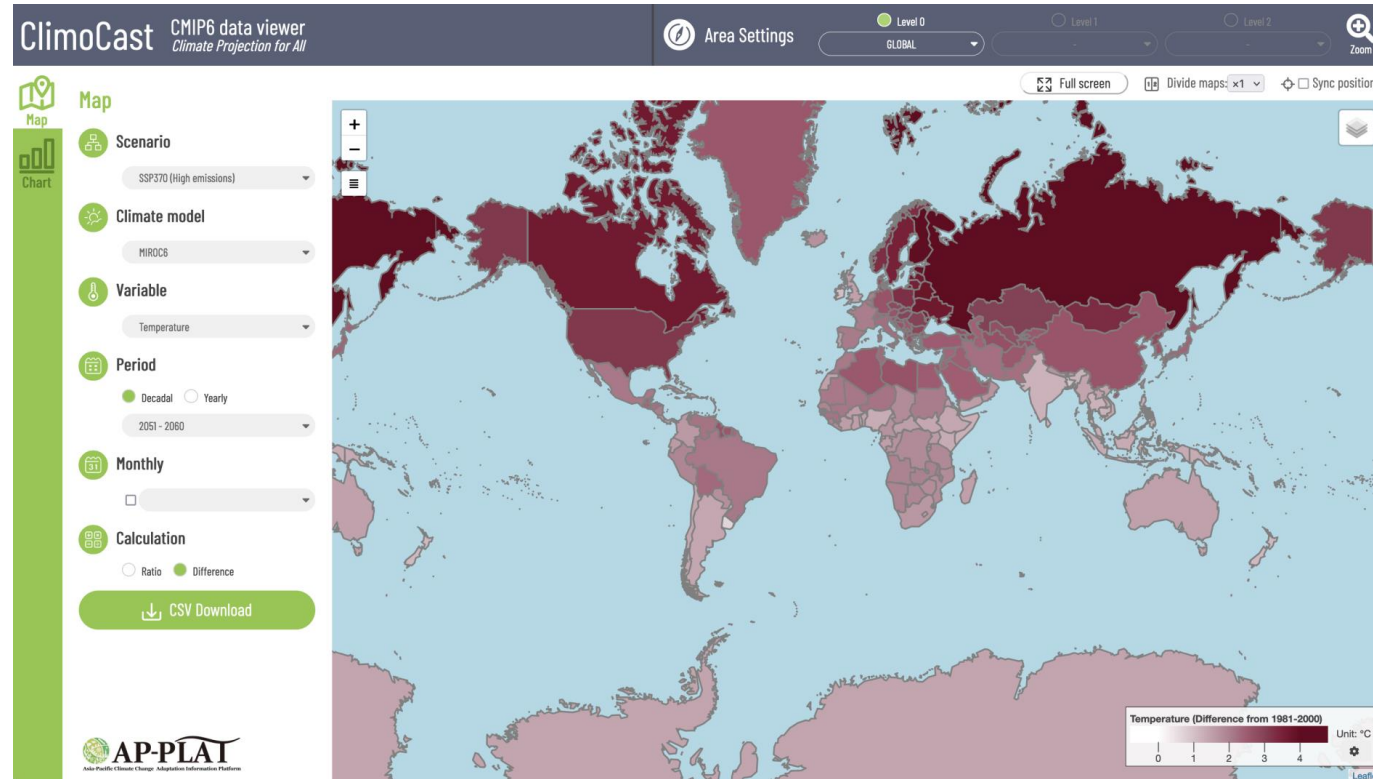
③ Download

STEP3: Chart mode



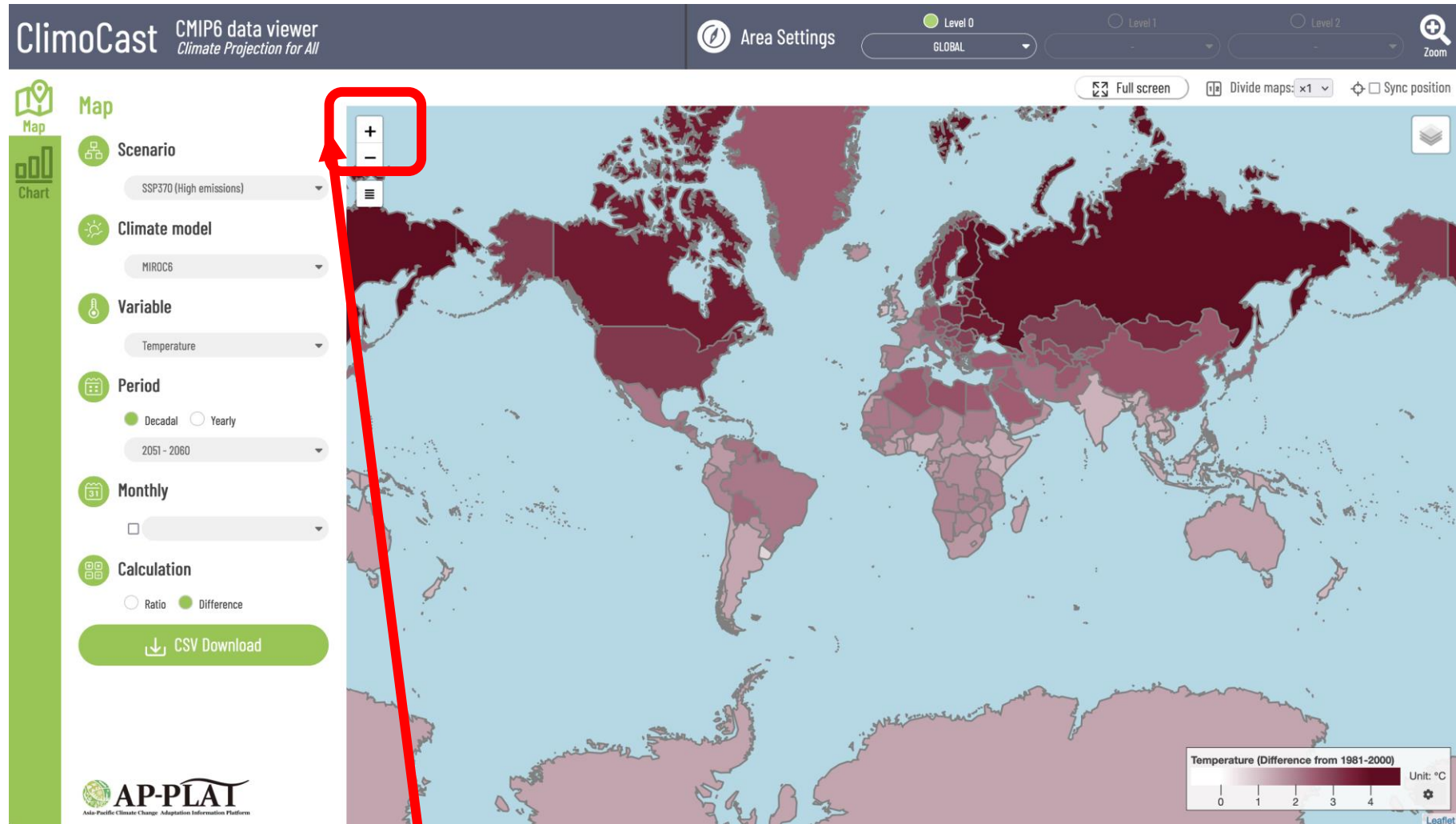
④ You can change climate projections shown in the graph

Step 4: Map mode



- You can geographically understand climate change in your country and province.
 - You can geographically compare climate change across countries, provinces, and towns.
 - Which province will have highest temperature increase?

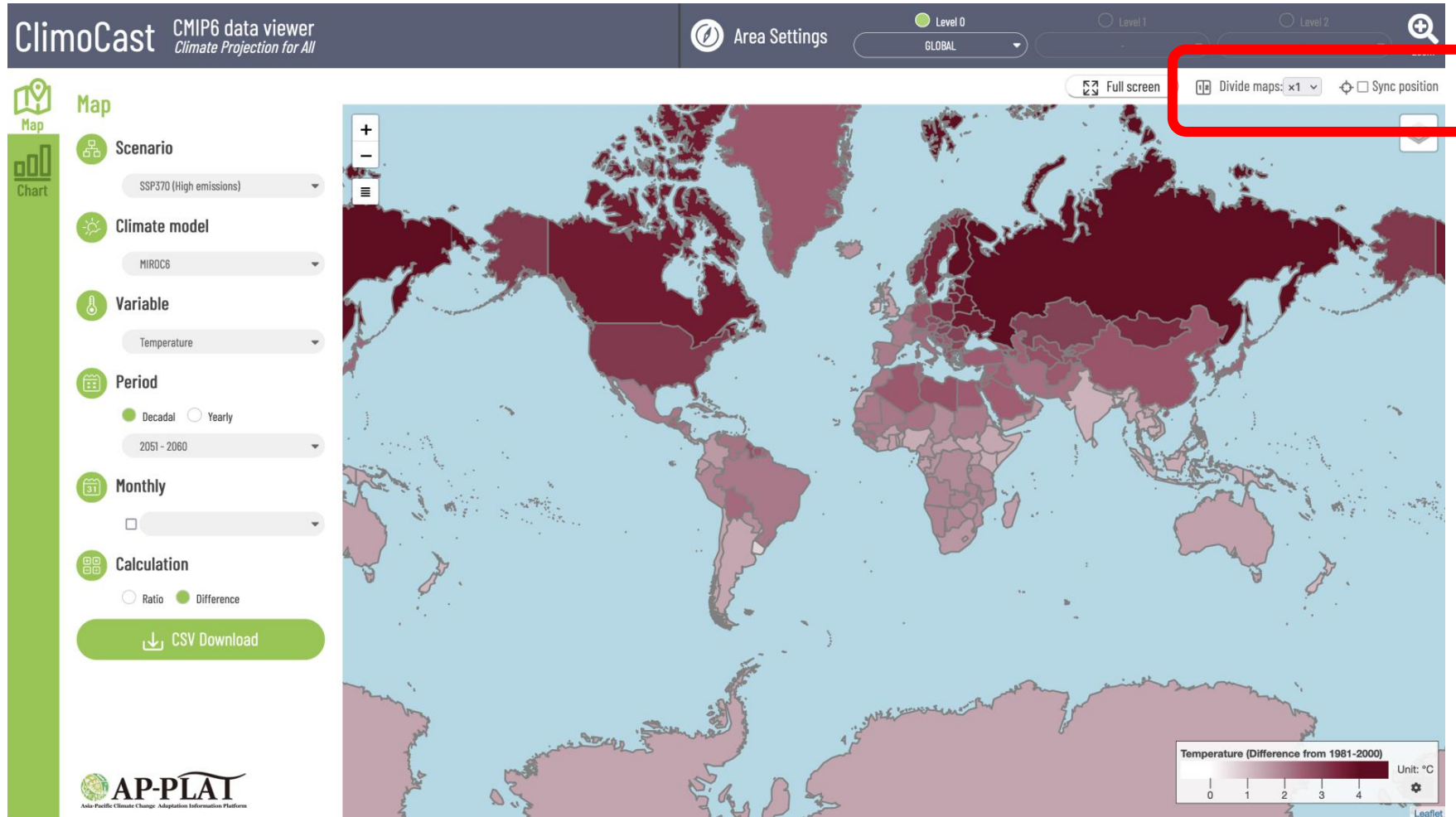
Step 4 : Map mode (Change region by hands)



① Zoom in and out

② Scroll the map

STEP5: Map mode (Split view)

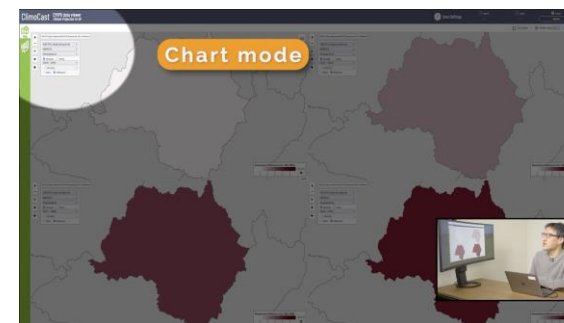
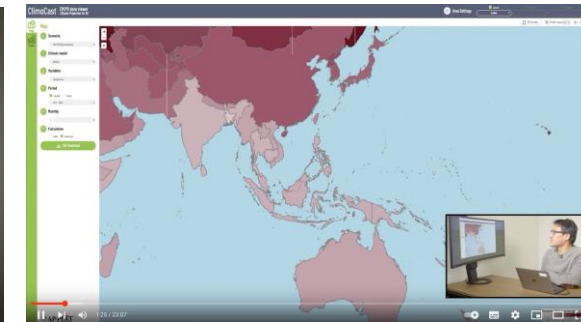
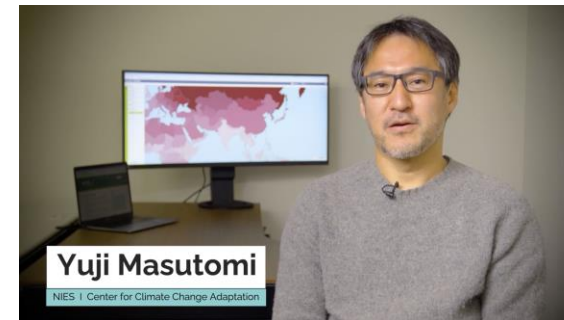


① Sprit view (1, 2, or 4 map)

② Synchronize the maps

Tutorial series on ClimoCast at Youtube

- Introduction
 - <https://www.youtube.com/watch?v=WMr4EWnFenQ>
- Map mode
 - <https://www.youtube.com/watch?v=iO6DUSnqnHM>
- Chart mode
 - <https://www.youtube.com/watch?v=qnRK3el5Wqo>
- Conclusion
 - <https://www.youtube.com/watch?v=HGGjMfw4zyw>



Goals

- 【Minimum】 : You can recognize and remember **ClimoCast**
- 【Intermediate】 : You can get climate data through **ClimoCast**
- 【Final】 : You use **ClimoCast** in your work

Thank you so much

Contact me if you have any questions about AP-PLAT and tools.

masutomi.yuji@nies.go.jp