



**World Customs
Organization**

Harmonization of Railway Transit Datasets

Christian Lembke

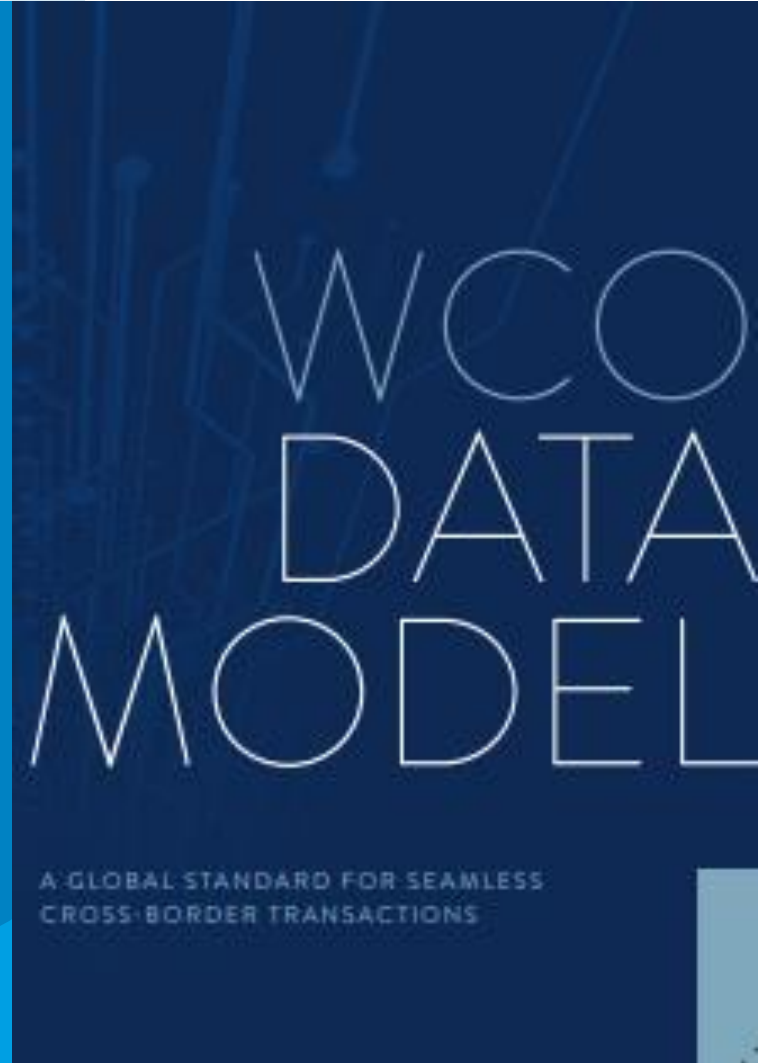
Procedure and Facilitation, Compliance and Facilitation
World Customs Organization

**ESCAP-GTI International Seminar on Trade
Facilitation in North-East Asia**

8 February 2023

- The WCO Data Model (DM) is the data foundation for global trade interoperability.
- The WCO DM a universal language for cross-border data exchange enabling the implementation of Single Window systems and fuelling Data Analytics.
- It is a compilation of clearly structured, harmonized, standardized, and reusable sets of data definitions and electronic messages designed to meet the operational and legal requirements of Customs and other cross-border regulatory agencies (CBRAs) responsible for border management.

www.wcoomd.org/DataModel

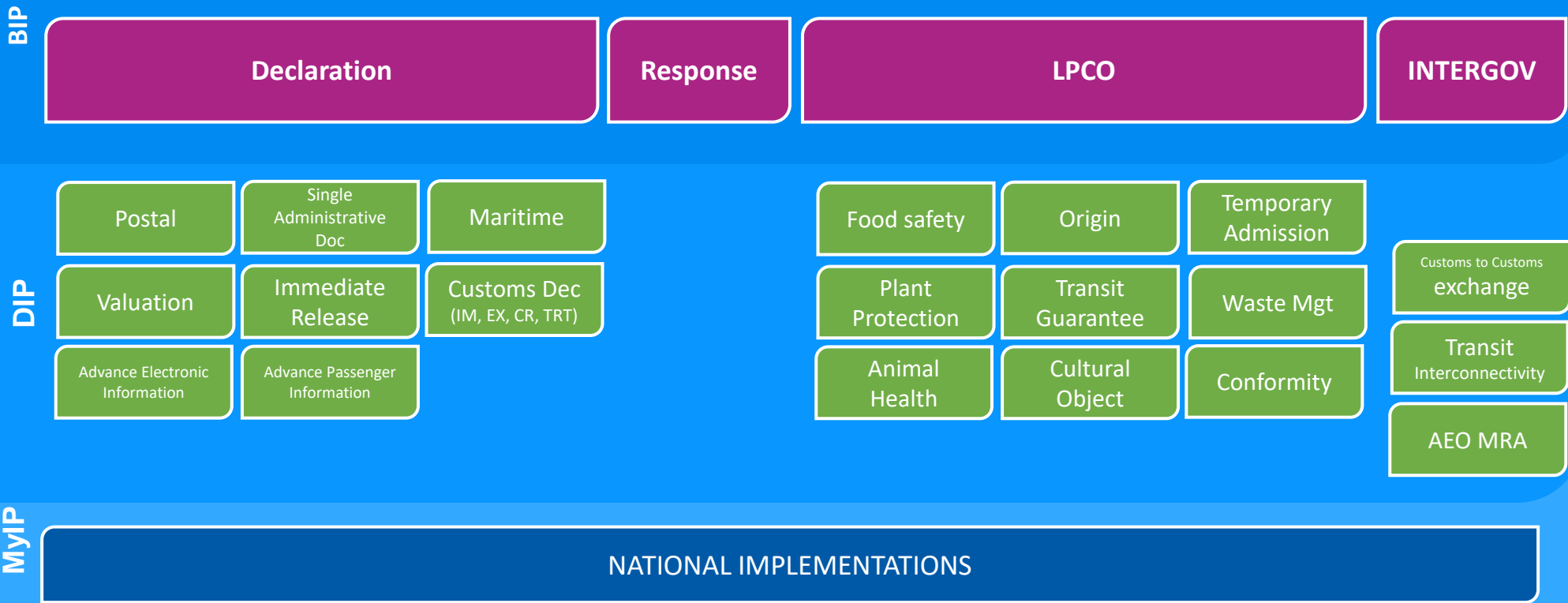


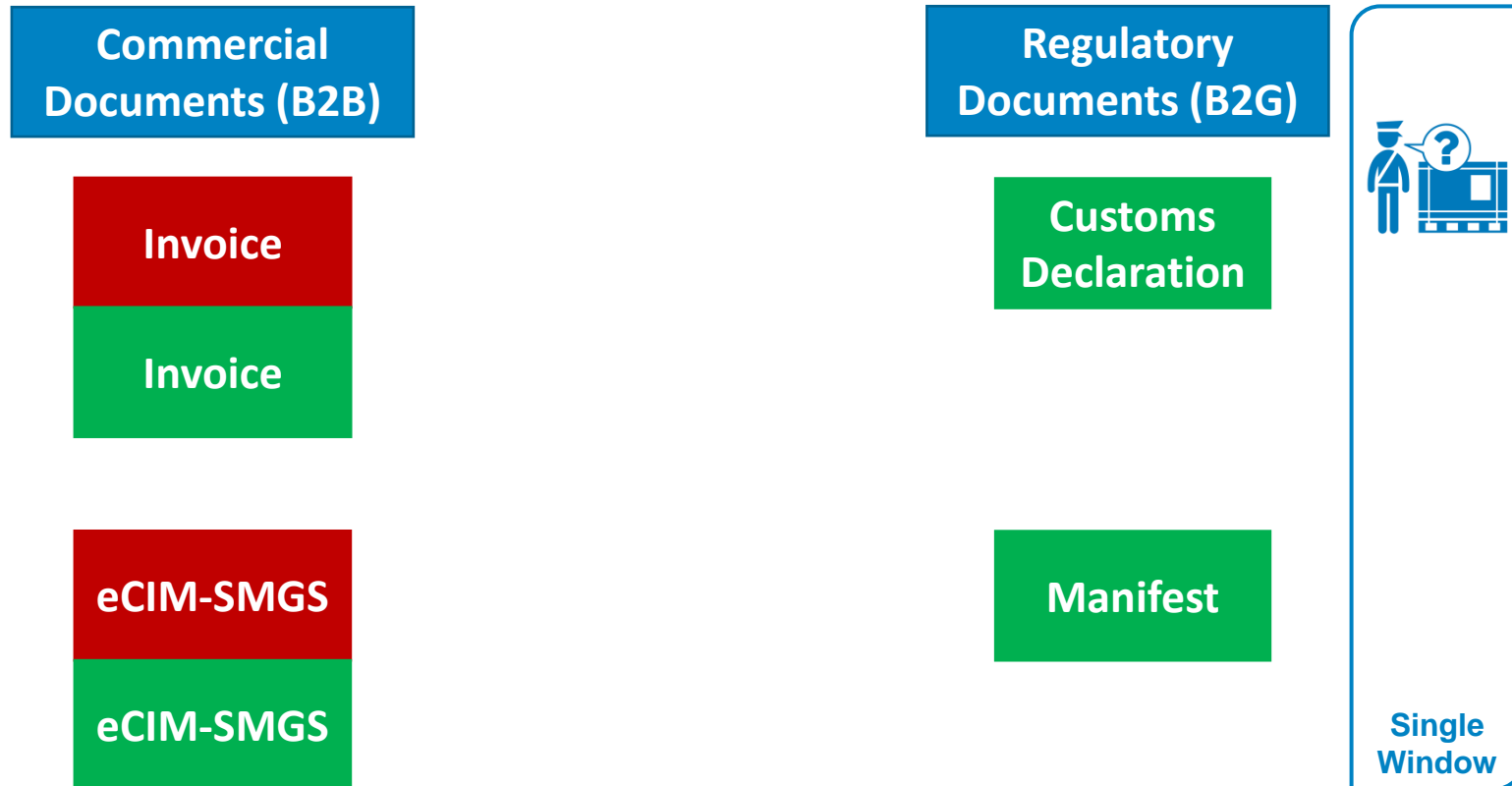
Information Packages:

- WCO DM is a multipurpose regulatory data management framework;
- Information package is a tool to organize the subsets of the WCO DM based on their specific purposes
- An IP may have additional details related to the procedures it is implemented
- The basis to generate certain electronic messages / electronic messages' schemas.

Library

Overall Information Model



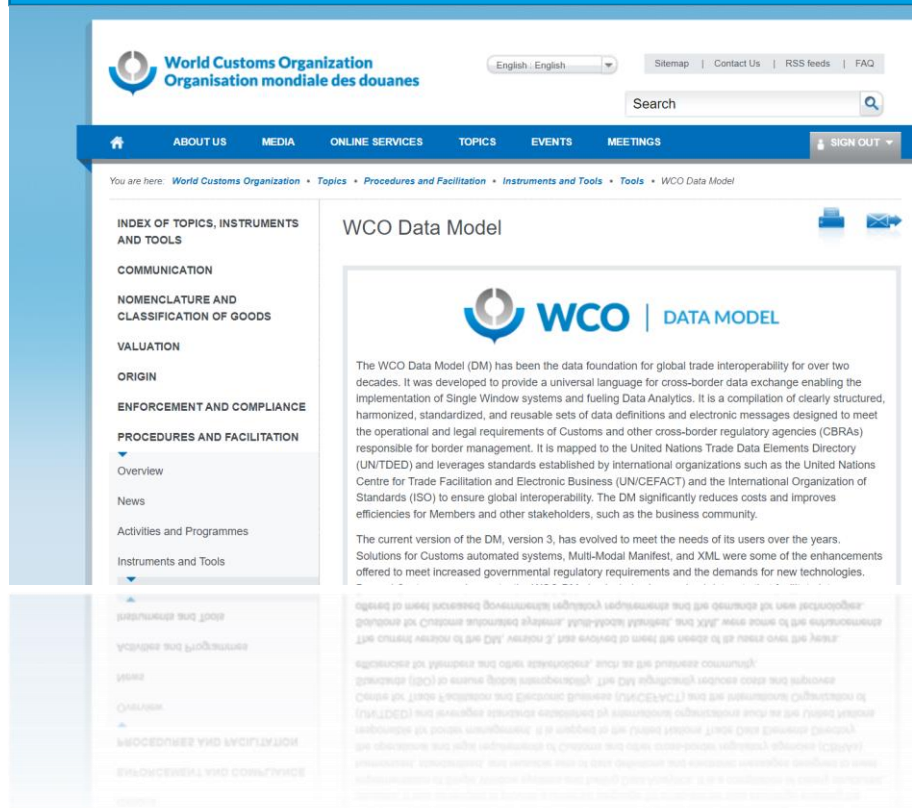


Steps to be undertaken by the WCO to develop a harmonized railway transit dataset:

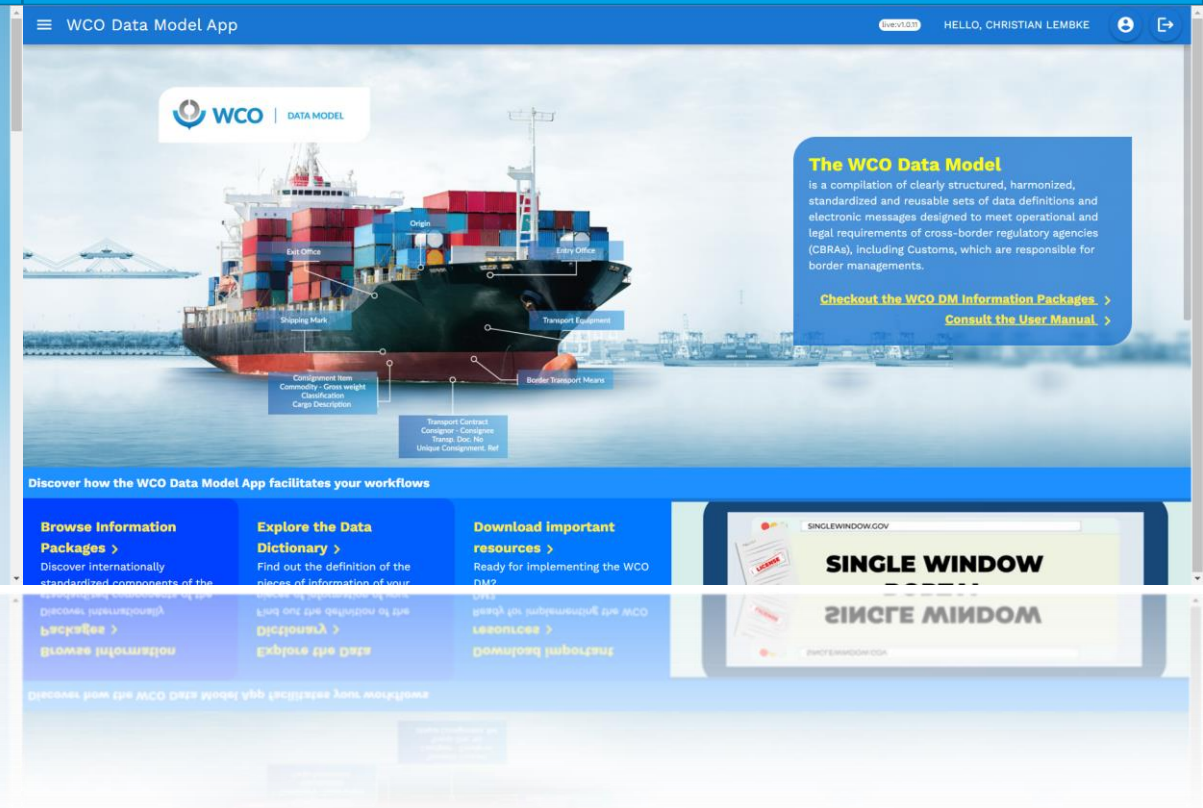
1. WCO Members share their national railway datasets.
2. Mapping of the national datasets to the WCO Data Model.
3. Mapping of the eCIM-SMGS to the WCO Data Model.
4. Development of a harmonized railway transit dataset as a subset of the WCO Data Model.
5. The harmonized dataset will be published as a part of the WCO Data Model package and as an Annex to the WCO Railway Guidance.

Where can you find the WCO Data Model?

wcoomd.org/DataModel



datamodel.wcoomd.org





**World Customs
Organization**

Thank you

Christian Lembke

Procedure and Facilitation, Compliance and Facilitation
World Customs Organization

Christian.lembke@wcoomd.org

