



CIDGA

国际发展与全球农业学院
COLLEGE of INTERNATIONAL DEVELOPMENT
and GLOBAL AGRICULTURE

From BRI to GDI: China's New development Cooperation Strategies and Actions

Prof. Chuanhong Zhang

College of International Development and Global Agriculture/

College of Humanities and Development Studies

China Agricultural University

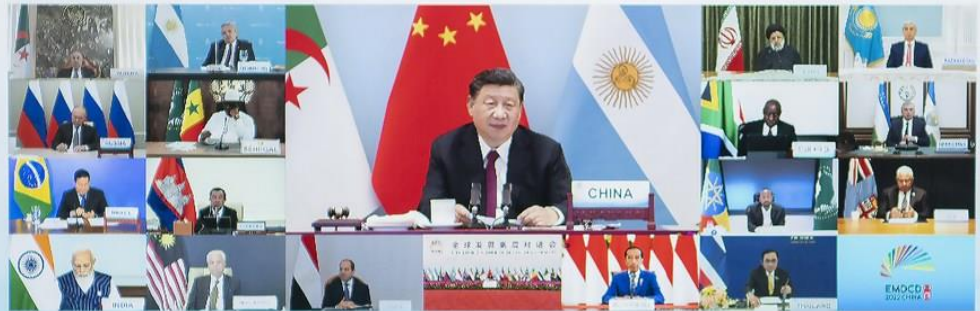
Email: dianazhang@cau.edu.cn

Outline

- The backgrounds of BRI and GDI
- The principles of BRI and GDI
- The progresses of BRI and GDI
- Possible challenges
- New directions



全球发展高层对话会
HIGH-LEVEL DIALOGUE ON GLOBAL DEVELOPMENT



The background and objectives of BRI and GDI

➤ **BRI (2013)**

- Drawing inspiration on ancient silk road
- Based on China's own development experience
- Transferring China's production capacity surplus
- Inject new impetus into global economy
- Build a new international economic cooperation platform

➤ **GDI (2021)**

- Multiple global crises: pandemic, geopolitics, climate change
- Sluggish global economy/lack of global consensus
- Reversed progress of SDGs
- Calling for international commitment on development-focused, people-centered, innovation-driven, human-nature harmony, results-oriented actions.



CIDGA

国际发展与全球农业学院
COLLEGE of INTERNATIONAL DEVELOPMENT
and GLOBAL AGRICULTURE

The principles of BRI and GDI

- Open and inclusive
- Mutual benefit
- Cooperative and win-win
- "Planning together, building together and sharing benefits together"
- Green and clean cooperation
- High-standard
- People-centered
- Sustainable
- Mutual learning

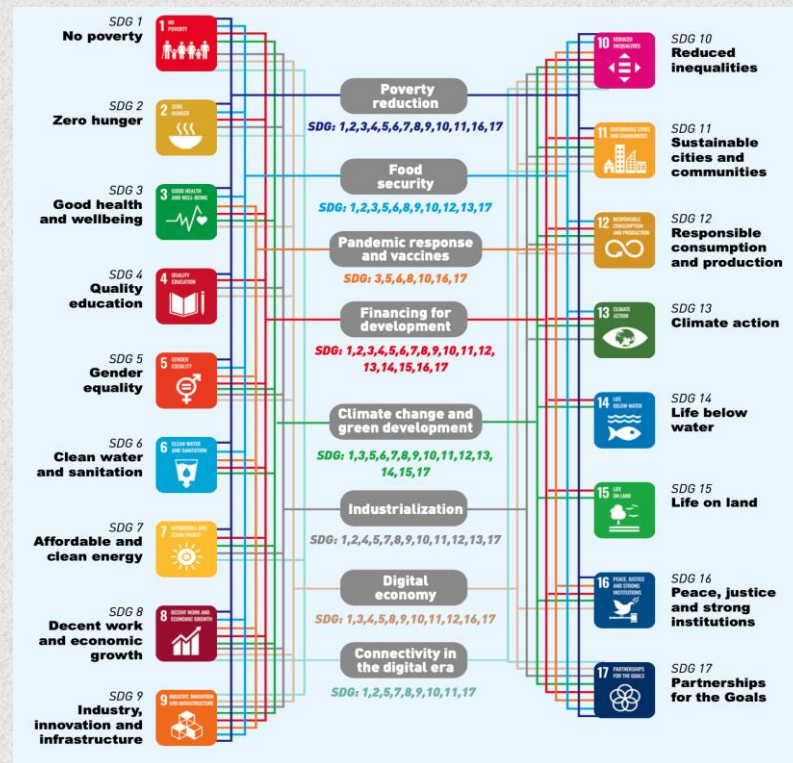


Priority areas of BRI

- Policy coordination
- Infrastructure connectivity
- Trade facilitation
- Capital flow
- People-to-people connectivity
- Other areas: green development, digital connectivity, STI and health

Priority areas of GDI

- Build global consensus
- Accelerate the implementation of Agenda 2030
- Promote policy dialogue, experience sharing, capacity building and practical cooperation through specific projects in various fields
- Invest in “small but beautiful” projects



Main progress of BRI

- Signed more than 200 BRI cooperation documents with 152 countries and 32 international organizations.
- Established more than 3,000 cooperation projects
- Constructed six major international economic corridors
- China has become a main trading partner of more than 140 countries and territories.
- Main source of investment
- Narrow the gap of public goods provision
- 20 multilateral cooperation platforms
- Art festivals, expos and exhibitions, Luban workshop

Progress of GDI

- Established the “Group of Friends” of GDI (more than 70 countries)
- Launched Global Development Promotion Center and inaugurated “Global Development Promotion Center Network”(45 countries)
- Pushed 32 deliverables of of the High-level Dialogue on Global Development
- Polling resources: projects pools and funds pools (grants, GDSSCF, CDB, EXIM Bank, ADB)
- Forums and platforms
- Innovation Training base in Xiaomen
- Home of Youth leaders
- Digital platform
- Think-tank alliance



CIDGA

国际发展与全球农业学院
COLLEGE of INTERNATIONAL DEVELOPMENT
and GLOBAL AGRICULTURE

Challenges of BRI and GDI

- **Debt stress**
- **Project delays**
- **Corruption**
- **Cultural clashes/misunderstanding**
- **Competition/jealousy from the west**



CIDGA

国际发展与全球农业学院
COLLEGE of INTERNATIONAL DEVELOPMENT
and GLOBAL AGRICULTURE

New directions of BRI and GDI

➤ 8 actions to promote high-quality BRI

- 1) build multidimensional Belt and Road connectivity network: New International Land-Sea Trade Corridor and the Air Silk Road
- 2) support an open world economy (trade to exceed 3.2tri 2024 and 5 tri 2028)
- 3) carry out practical cooperation for the BRI(both signature projects and "small yet smart" livelihood programs)
- 4) continue to promote green development
- 5) continue to advance scientific and technological innovation
- 6) support people-to-people exchanges
- 7) promote integrity-based Belt and Road cooperation.
- 8) strengthen the institutional building for international Belt and Road cooperation

➤ New areas: green development, digital area, STI, health



Contact Me

—
dianazhang@cau.edu.cn
No.17, Qinghua Donglu,
Haidian District, Beijing,
P.R.China 100083