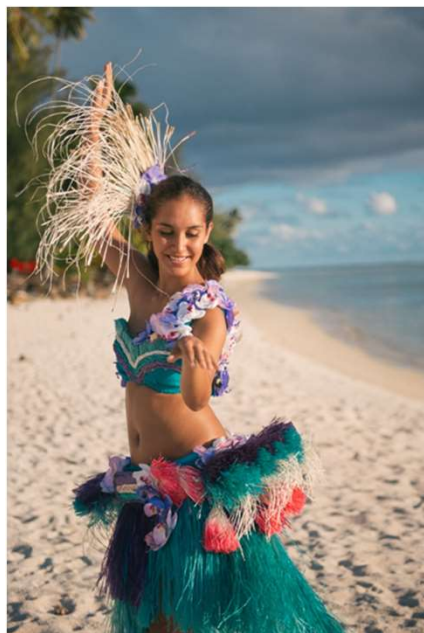


2050 Strategy for the Blue Pacific Continent

PACIFCI FORUM ON SUSTAINABLE DEVELOPMENT

25 – 26 November 2021



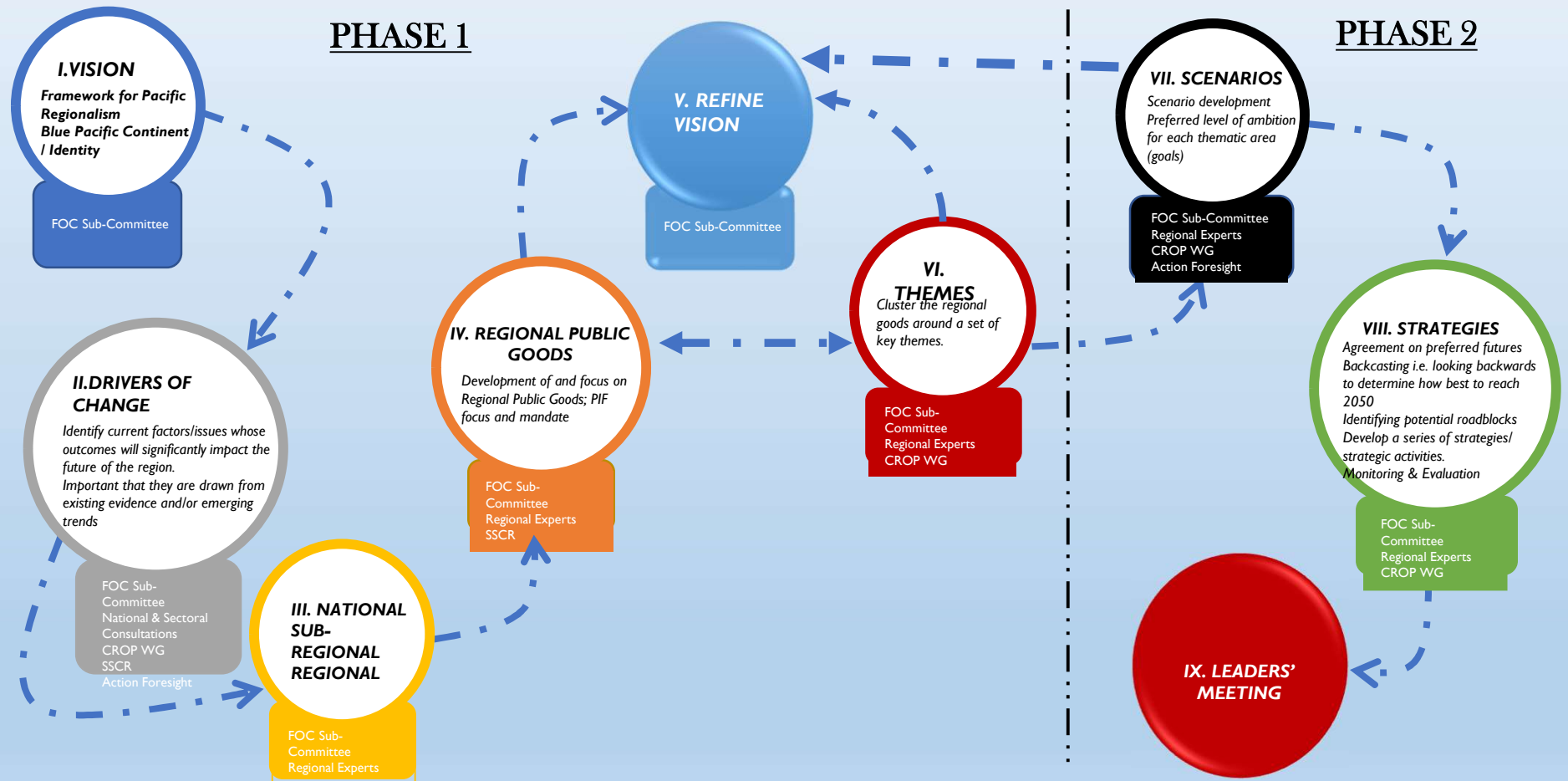
PACIFIC ISLANDS FORUM



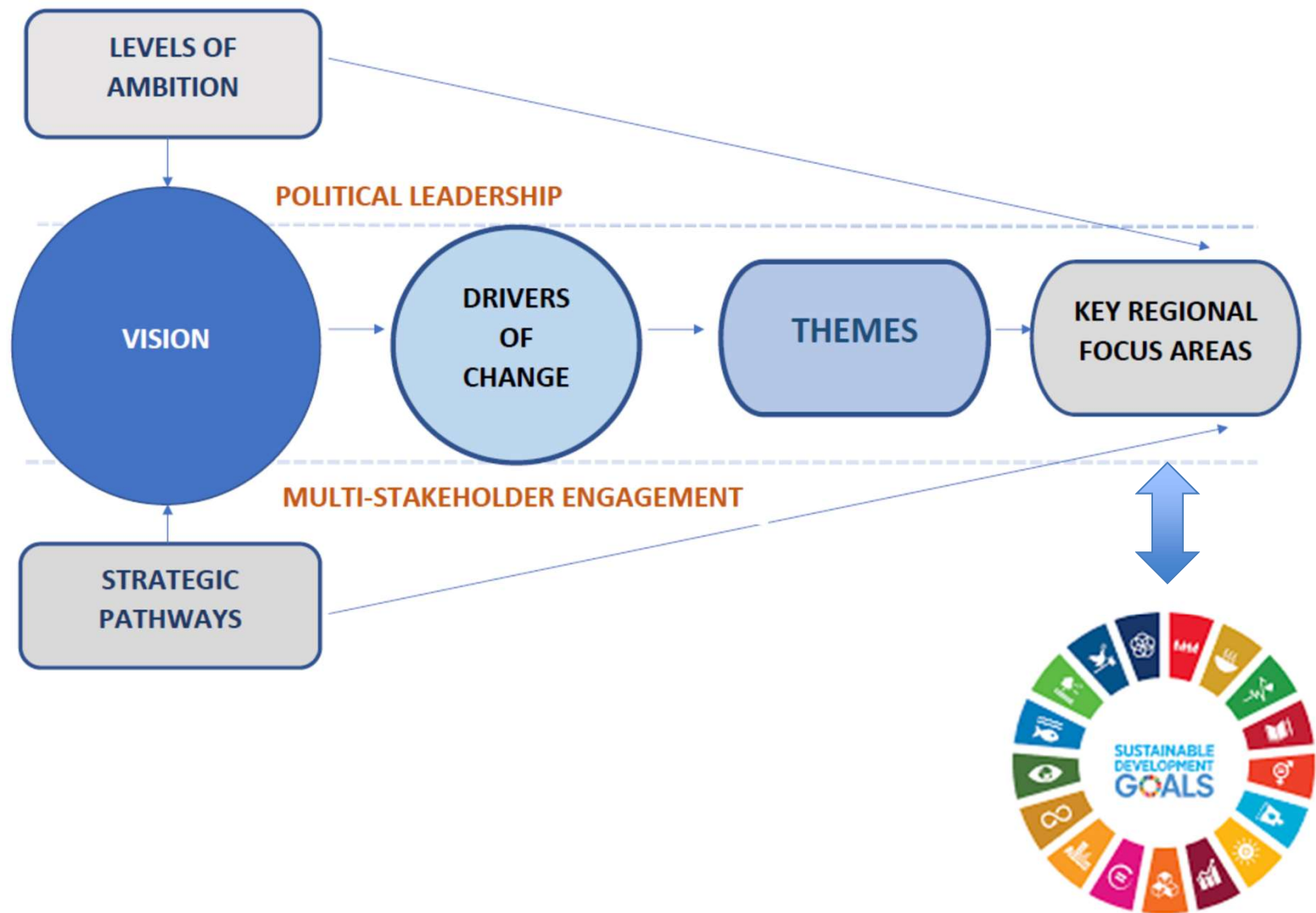
2050 Strategy for the Blue Pacific Continent

- At their 2019 meeting in Tuvalu, Forum Leaders endorsed the development of the 2050 Strategy for the Blue Pacific Continent
- Leaders **noted** that escalating climate change related impacts coupled with the intensification of geostrategic competition, is exacerbating the region's vulnerabilities. Need for urgent action now!
- **Protect** and **secure** our **people**, **place** and **prospects**.
- Regional Collective Actions, Strategic Coherence
- Must Respond to Present Context: COVID-19 & Climate Change
- Flexible and Adaptable
- **Member driven through FOC Sub-Committee – Fiji, Vanuatu**
- **To be conveyed to Leaders early 2022**

METHODOLOGY: DEVELOPMENT OF THE 2050 STRATEGY FOR THE BLUE PACIFIC CONTINENT



2050 STRATEGY OUTCOMES & ALIGNMENT TO THE 2030 AGENDA & SDGs





5 Thematic Cluster Groups

Clusters / Themes

Gender, Social Inclusion and Culture

1. Gender and Social Inclusion
2. Education
3. Health

Oceans and Natural Environment

1. Oceans
2. Climate Change and Resilience

Resources and Economic

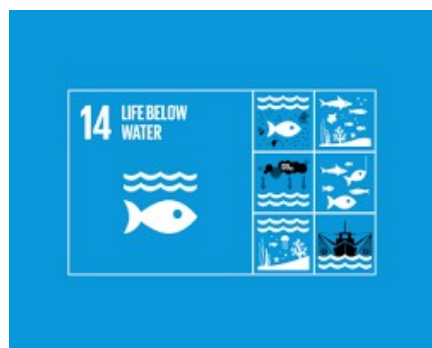
1. Entrepreneurship and Employment
2. Resource Management

Technology and Connectivity

1. Data, Technology, Innovation
2. ICT, Air and Sea Transport

Political

1. Political Commitment to Regionalism
2. External Relations
3. NSA Participation
4. Regional Architecture



DRAFT LEVELS OF AMBITION



Political

By 2050, the Pacific countries and territories while fully recognising their national sovereignty, work together to safeguard the Blue Pacific continent and achieve regional priorities through an effective regional architecture that involves the region's non-state actors and external partners to strengthen the region's economic, social and environmental outcomes thereby ensuring the safety, security and well-being of all Pacific people.



Oceans and Natural Environment

By 2050, Pacific Ocean people are steadfastly resilient to climate change, disasters and environmental threats that threaten their island homes, way of life and very existence through the enhanced safeguarding as well as productive use of the Blue Pacific Ocean Continent and its life-giving function.



Gender, Social Inclusion and Culture

In 2050, the region will thrive based on its unique and positive cultural values and identities; by its commitment to ensuring full inclusivity, equity and equality for all people by defending and promoting human rights, gender equality and social inclusion so that no one is left behind; and by providing quality, affordable and accessible education, health, training, financial and other services for all Pacific people.



Resources and Economic Development

By 2050, the region will have achieved a sustainable, resilient and Pacific-relevant model of development that balances investment, international trade, low carbon commitments, import substitution, equity and value addition, and private sector development while bringing improved socio-economic wellbeing for all Pacific people by ensuring their access to employment, trade and investment in the region.



Technology and Connectivity

By 2050, the region's connectivity and commitment to regionalism will be sustained through access to more affordable, safe and reliable up-to-date air and sea transport infrastructure, systems and operations, and the adoption of up-to-date, innovative ICT infrastructure and technology, while ensuring adequate user-protection and cyber security.



CURRENT DRAFT VISION

“In recognizing the undeniable connection Pacific peoples have with their natural resources, environment, culture and livelihoods, their deep concern for urgent and immediate action to combat the threat of climate change and their shared stewardship of the of the Pacific Ocean, our Vision is for a resilient Pacific Region of peace, harmony, security, social inclusion and prosperity, that ensures all Pacific people can lead free, healthy and productive lives.”



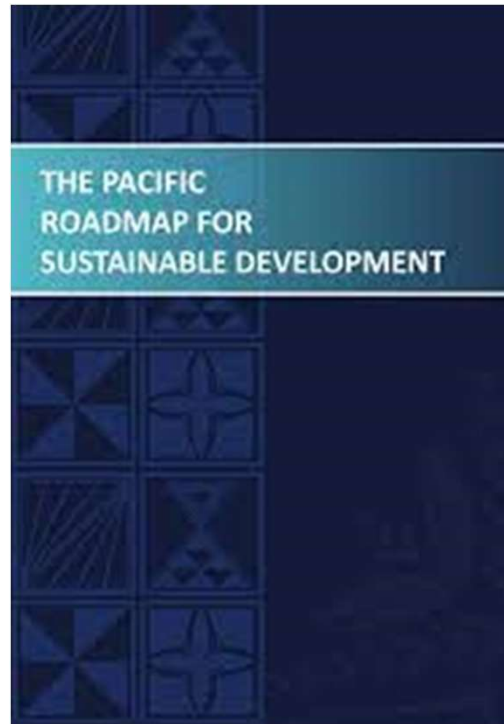
A LONG-TERM STRATEGY

Why?

- Big Ocean States – Mana of our People - Resilient, Independent Oceanic Continent;
- Response to current and future threats.

How?

- Integrated political, economic, social and environmental policy across sectors, territories and generations;
- Regional ownership and commitment;
- Broad participation and effective partnerships;
- Development of the necessary capacity and enabling environment;
- Focus on outcomes and means of implementation.



2050
STRATEGY
FOR THE
BLUE
PACIFIC
CONTINENT

- Strengthened Regional Solidarity – Political Commitment, People-centered and owned
- Strengthened Regional Cooperation - Partners align development cooperation to key regional issues (Avoid duplication)
- Complements National Efforts (sub-regional as well)
- Multi-stakeholder partnerships (Inclusive, Mutual accountability, Private Sector & CSO participation and investments)
- Evidence-based decision making (Report on regional commitments and progress)



VINAKA



PACIFIC ISLANDS FORUM

www.forumsec.org